

Datasheet for ABIN7255764

anti-FEN1 antibody

5 Images

[Go to Product page](#)

Overview

Quantity:	200 µL
Target:	FEN1
Reactivity:	Human, Mouse
Host:	Rabbit
Clonality:	Polyclonal
Conjugate:	This FEN1 antibody is un-conjugated
Application:	Western Blotting (WB), Immunohistochemistry (IHC), Immunofluorescence (IF)

Product Details

Immunogen:	Recombinant fusion protein of human FEN1 (NP_004102.1).
Isotype:	IgG
Characteristics:	Polyclonal Antibody
Purification:	Affinity purification

Target Details

Target:	FEN1
Alternative Name:	FEN1 (FEN1 Products)
Background:	The protein encoded by this gene removes 5' overhanging flaps in DNA repair and processes the 5' ends of Okazaki fragments in lagging strand DNA synthesis. Direct physical interaction between this protein and AP endonuclease 1 during long-patch base excision repair provides coordinated loading of the proteins onto the substrate, thus passing the substrate from one

Target Details

enzyme to another. The protein is a member of the XPG/RAD2 endonuclease family and is one of ten proteins essential for cell-free DNA replication. DNA secondary structure can inhibit flap processing at certain trinucleotide repeats in a length-dependent manner by concealing the 5' end of the flap that is necessary for both binding and cleavage by the protein encoded by this gene. Therefore, secondary structure can deter the protective function of this protein, leading to site-specific trinucleotide expansions.

Molecular Weight: Observed_MW: 48 kDa
Calculated_MW: 35 kDa/42 kDa

Gene ID: 2237

UniProt: [P39748](#)

Pathways: [Telomere Maintenance](#), [DNA Damage Repair](#), [DNA Replication](#), [Synthesis of DNA](#)

Application Details

Application Notes: WB 1:500-1:2000 IHC 1:50-1:200 IF 1:10-1:100

Restrictions: For Research Use only

Handling

Format: Liquid

Concentration: 1 mg/mL

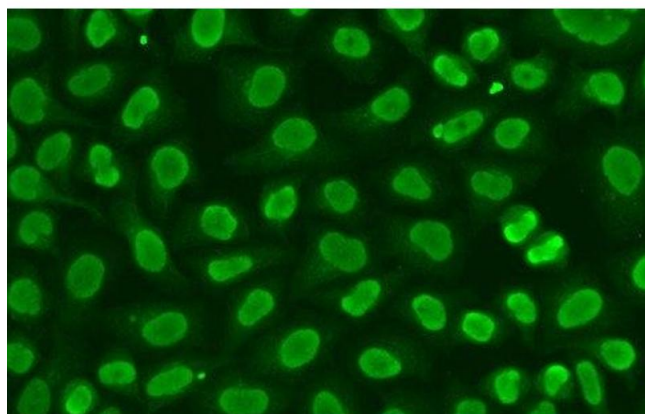
Buffer: PBS with 0.02 % sodium azide, 50 % glycerol, pH 7.3

Preservative: Sodium azide

Precaution of Use: This product contains Sodium azide: a POISONOUS AND HAZARDOUS SUBSTANCE which should be handled by trained staff only.

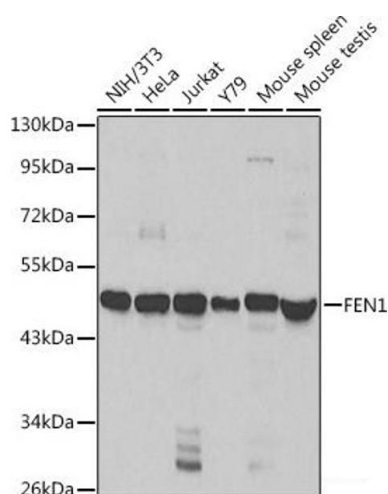
Storage: -20 °C

Storage Comment: Store at -20°C. Avoid freeze / thaw cycles.



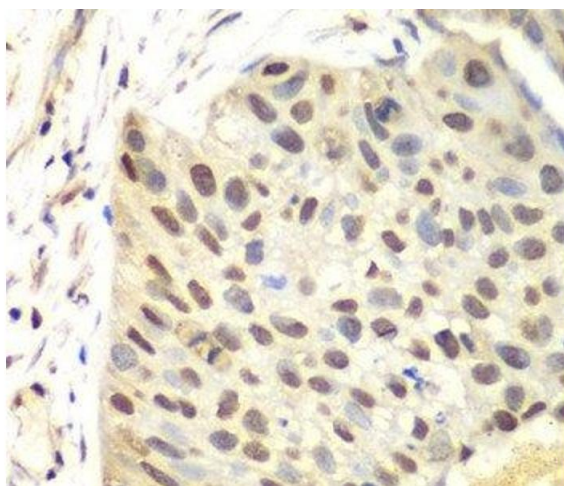
Immunofluorescence

Image 1. Immunofluorescence analysis of HeLa cells using FEN1 Polyclonal Antibody



Western Blotting

Image 2. Western blot analysis of extracts of various cell lines using FEN1 Polyclonal Antibody at dilution of 1:1000.



Immunohistochemistry (Paraffin-embedded Sections)

Image 3. Immunohistochemistry of paraffin-embedded Human lung cancer using FEN1 Polyclonal Antibody at dilution of 1:100 (40x lens).

Please check the [product details page](#) for more images. Overall 5 images are available for ABIN7255764.