

Datasheet for ABIN7255876

anti-GLMN antibody[Go to Product page](#)**1** Image

Overview

Quantity:	200 µL
Target:	GLMN
Reactivity:	Human, Mouse
Host:	Rabbit
Clonality:	Polyclonal
Conjugate:	This GLMN antibody is un-conjugated
Application:	Western Blotting (WB)

Product Details

Immunogen:	Recombinant fusion protein of human GLMN (NP_444504.1).
Isotype:	IgG
Characteristics:	Polyclonal Antibody
Purification:	Affinity purification

Target Details

Target:	GLMN
Alternative Name:	GLMN (GLMN Products)
Background:	<p>This gene encodes a phosphorylated protein that is a member of a Skp1-Cullin-F-box-like complex. The protein is essential for normal development of the vasculature and mutations in this gene have been associated with glomuvenous malformations, also called glomangiomas.</p> <p>Multiple splice variants encoding different isoforms have been found for this gene.</p>

Target Details

Molecular Weight:	Observed_MW: 68 kDa
	Calculated_MW: 48 kDa/68 kDa
Gene ID:	11146
UniProt:	Q92990
Pathways:	Tube Formation

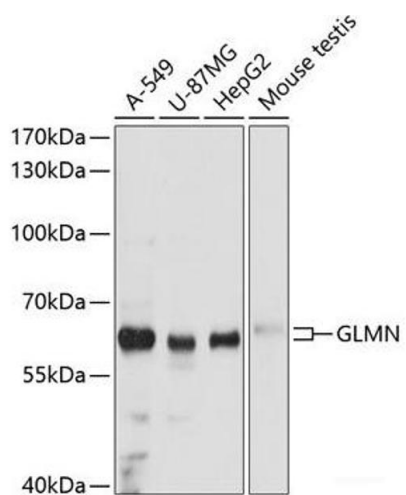
Application Details

Application Notes:	WB 1:500-1:2000
Restrictions:	For Research Use only

Handling

Format:	Liquid
Concentration:	1 mg/mL
Buffer:	PBS with 0.02 % sodium azide, 50 % glycerol, pH 7.3
Preservative:	Sodium azide
Precaution of Use:	This product contains Sodium azide: a POISONOUS AND HAZARDOUS SUBSTANCE which should be handled by trained staff only.
Storage:	-20 °C
Storage Comment:	Store at -20°C. Avoid freeze / thaw cycles.

Images



Western Blotting

Image 1. Western blot analysis of extracts of various cell lines using GLMN Polyclonal Antibody at dilution of 1:3000.