



## Datasheet for ABIN7255886 anti-RPL38 antibody



[Go to Product page](#)

### 1 Image

#### Overview

Quantity:	200 µL
Target:	RPL38
Reactivity:	Human
Host:	Rabbit
Clonality:	Polyclonal
Conjugate:	This RPL38 antibody is un-conjugated
Application:	Western Blotting (WB)

#### Product Details

Immunogen:	Recombinant fusion protein of human RPL38 (NP_000990.1).
Isotype:	IgG
Characteristics:	Polyclonal Antibody
Purification:	Affinity purification

#### Target Details

Target:	RPL38
Alternative Name:	RPL38 ( <a href="#">RPL38 Products</a> )
Background:	Ribosomes, the organelles that catalyze protein synthesis, consist of a small 40S subunit and a large 60S subunit. Together these subunits are composed of 4 RNA species and approximately 80 structurally distinct proteins. This gene encodes a ribosomal protein that is a component of the 60S subunit. The protein belongs to the L38E family of ribosomal proteins. It is located in

## Target Details

---

the cytoplasm. Alternative splice variants have been identified, both encoding the same protein. As is typical for genes encoding ribosomal proteins, there are multiple processed pseudogenes of this gene dispersed through the genome, including one located in the promoter region of the type 1 angiotensin II receptor gene.

Molecular Weight: Observed\_MW: 12 kDa  
Calculated\_MW: 8 kDa

Gene ID: 6169

UniProt: [P63173](#)

Pathways: [Sensory Perception of Sound](#), [Ribonucleoprotein Complex Subunit Organization](#), [Ribosome Assembly](#)

## Application Details

---

Application Notes: WB 1:500-1:2000

Restrictions: For Research Use only

## Handling

---

Format: Liquid

Concentration: 1 mg/mL

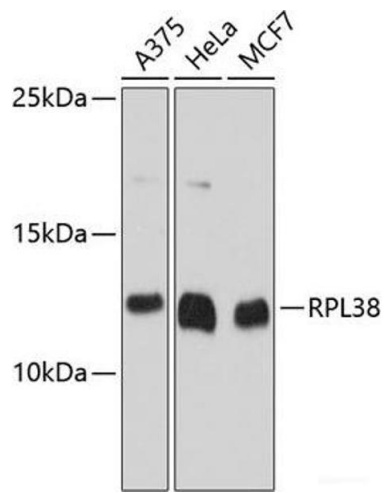
Buffer: PBS with 0.02 % sodium azide, 50 % glycerol, pH 7.3

Preservative: Sodium azide

Precaution of Use: This product contains Sodium azide: a POISONOUS AND HAZARDOUS SUBSTANCE which should be handled by trained staff only.

Storage: -20 °C

Storage Comment: Store at -20°C. Avoid freeze / thaw cycles.



### Western Blotting

**Image 1.** Western blot analysis of extracts of various cell lines using RPL38 Polyclonal Antibody at dilution of 1:3000.