

Datasheet for ABIN7255894

**anti-TPM3 antibody**

## 2 Images

[Go to Product page](#)

## Overview

Quantity:	200 µL
Target:	TPM3
Reactivity:	Human, Mouse, Rat
Host:	Rabbit
Clonality:	Polyclonal
Conjugate:	This TPM3 antibody is un-conjugated
Application:	Western Blotting (WB), Immunofluorescence (IF)

## Product Details

Immunogen:	Recombinant fusion protein of human TPM3 (NP_689476.2).
Isotype:	IgG
Characteristics:	Polyclonal Antibody
Purification:	Affinity purification

## Target Details

Target:	TPM3
Alternative Name:	TPM3 ( <a href="#">TPM3 Products</a> )
Background:	<p>This gene encodes a member of the tropomyosin family of actin-binding proteins. Tropomyosins are dimers of coiled-coil proteins that provide stability to actin filaments and regulate access of other actin-binding proteins. Mutations in this gene result in autosomal dominant nemaline myopathy and other muscle disorders. This locus is involved in</p>

## Target Details

translocations with other loci, including anaplastic lymphoma receptor tyrosine kinase (ALK) and neurotrophic tyrosine kinase receptor type 1 (NTRK1), which result in the formation of fusion proteins that act as oncogenes. There are numerous pseudogenes for this gene on different chromosomes. Alternative splicing results in multiple transcript variants.

Molecular Weight: Observed\_MW: 38 kDa  
Calculated\_MW: 18 kDa/28 kDa/29 kDa/32 kDa

Gene ID: 7170

UniProt: [P06753](#)

## Application Details

Application Notes: WB 1:500-1:2000 IF 1:50-1:200

Restrictions: For Research Use only

## Handling

Format: Liquid

Concentration: 1 mg/mL

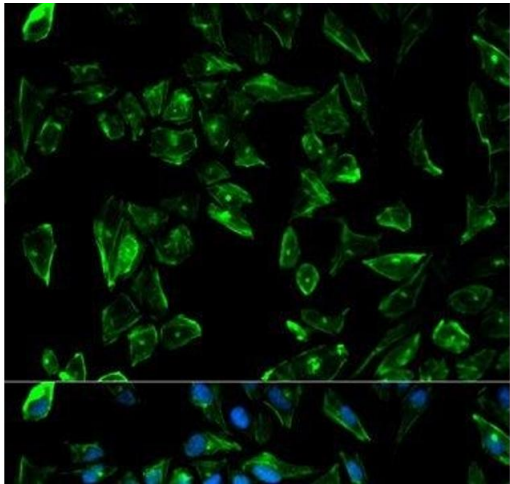
Buffer: PBS with 0.02 % sodium azide, 50 % glycerol, pH 7.3

Preservative: Sodium azide

Precaution of Use: This product contains Sodium azide: a POISONOUS AND HAZARDOUS SUBSTANCE which should be handled by trained staff only.

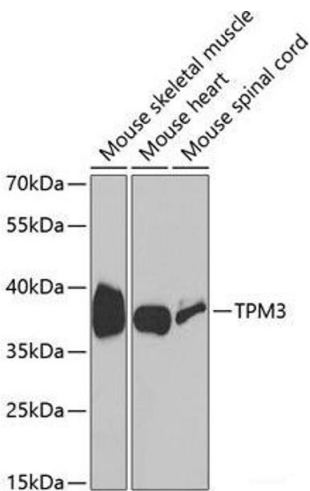
Storage: -20 °C

Storage Comment: Store at -20°C. Avoid freeze / thaw cycles.



Immunofluorescence

**Image 1.** Immunofluorescence analysis of HeLa cells using TPM3 Polyclonal Antibody



Western Blotting

**Image 2.** Western blot analysis of extracts of various cell lines using TPM3 Polyclonal Antibody at dilution of 1:1000.