

Datasheet for ABIN7255904

anti-SEL1L antibody**1** Image[Go to Product page](#)

Overview

Quantity:	200 µL
Target:	SEL1L
Reactivity:	Human, Mouse, Rat
Host:	Rabbit
Clonality:	Polyclonal
Conjugate:	This SEL1L antibody is un-conjugated
Application:	Western Blotting (WB)

Product Details

Immunogen:	Recombinant fusion protein of human SEL1L (NP_005056.3).
Isotype:	IgG
Characteristics:	Polyclonal Antibody
Purification:	Affinity purification

Target Details

Target:	SEL1L
Alternative Name:	SEL1L (SEL1L Products)
Background:	The protein encoded by this gene is part of a protein complex required for the retrotranslocation or dislocation of misfolded proteins from the endoplasmic reticulum lumen to the cytosol, where they are degraded by the proteasome in a ubiquitin-dependent manner. Alternatively spliced transcript variants encoding different isoforms have been found for this gene.

Target Details

Molecular Weight:	Observed_MW: 102 kDa
	Calculated_MW: 33 kDa/88 kDa
Gene ID:	6400
UniProt:	Q9UBV2

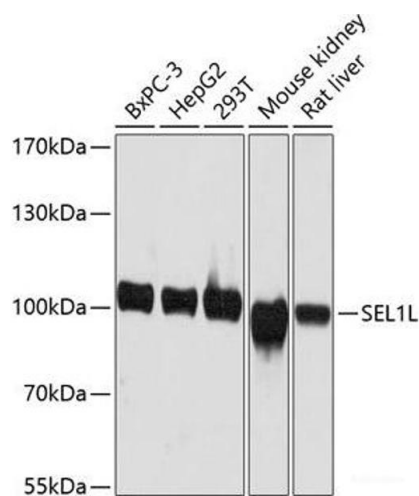
Application Details

Application Notes:	WB 1:500-1:2000
Restrictions:	For Research Use only

Handling

Format:	Liquid
Concentration:	1 mg/mL
Buffer:	PBS with 0.02 % sodium azide, 50 % glycerol, pH 7.3
Preservative:	Sodium azide
Precaution of Use:	This product contains Sodium azide: a POISONOUS AND HAZARDOUS SUBSTANCE which should be handled by trained staff only.
Storage:	-20 °C
Storage Comment:	Store at -20°C. Avoid freeze / thaw cycles.

Images



Western Blotting

Image 1. Western blot analysis of extracts of various cell lines using SEL1L Polyclonal Antibody at dilution of 1:3000.