

Datasheet for ABIN7255918

anti-SEC23A antibody[Go to Product page](#)**1** Image

Overview

| | |
|--------------|---------------------------------------|
| Quantity: | 200 µL |
| Target: | SEC23A |
| Reactivity: | Human, Mouse, Rat |
| Host: | Rabbit |
| Clonality: | Polyclonal |
| Conjugate: | This SEC23A antibody is un-conjugated |
| Application: | Western Blotting (WB) |

Product Details

| | |
|------------------|---|
| Immunogen: | Recombinant fusion protein of human SEC23A (NP_006355.2). |
| Isotype: | IgG |
| Characteristics: | Polyclonal Antibody |
| Purification: | Affinity purification |

Target Details

| | |
|-------------------|--|
| Target: | SEC23A |
| Alternative Name: | SEC23A (SEC23A Products) |
| Background: | The protein encoded by this gene is a member of the SEC23 subfamily of the SEC23/SEC24 family. It is part of a protein complex and found in the ribosome-free transitional face of the endoplasmic reticulum (ER) and associated vesicles. This protein has similarity to yeast Sec23p component of COPII. COPII is the coat protein complex responsible for vesicle budding |

Target Details

from the ER. The encoded protein is suggested to play a role in the ER-Golgi protein trafficking.

Molecular Weight: Observed_MW: 86 kDa
Calculated_MW: 63 kDa/86 kDa

Gene ID: 10484

UniProt: [Q15436](#)

Application Details

Application Notes: WB 1:500-1:2000

Restrictions: For Research Use only

Handling

Format: Liquid

Concentration: 1 mg/mL

Buffer: PBS with 0.02 % sodium azide, 50 % glycerol, pH 7.3

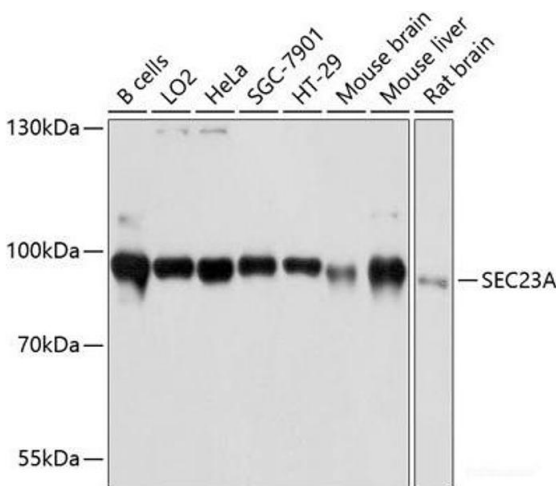
Preservative: Sodium azide

Precaution of Use: This product contains Sodium azide: a POISONOUS AND HAZARDOUS SUBSTANCE which should be handled by trained staff only.

Storage: -20 °C

Storage Comment: Store at -20°C. Avoid freeze / thaw cycles.

Images



Western Blotting

Image 1. Western blot analysis of extracts of various cell lines using SEC23A Polyclonal Antibody at dilution of 1:3000.