

Datasheet for ABIN7255922

**anti-DCI antibody**

## 2 Images

[Go to Product page](#)

## Overview

|              |  |
|--------------|--|
| Quantity:    | 200 µL   |
| Target:      | DCI (ECI1)                                     |
| Reactivity:  | Human, Mouse                                   |
| Host:        | Rabbit   |
| Clonality:   | Polyclonal                                     |
| Conjugate:   | This DCI antibody is un-conjugated             |
| Application: | Western Blotting (WB), Immunofluorescence (IF) |

## Product Details

|                  |   |
|------------------|---|
| Immunogen:       | Recombinant fusion protein of human ECI1 (NP_001910.2). |
| Isotype:         | IgG   |
| Characteristics: | Polyclonal Antibody                                     |
| Purification:    | Affinity purification                                   |

## Target Details

|                   |  |
|-------------------|--|
| Target:           | DCI (ECI1)   |
| Alternative Name: | ECI1 ( <a href="#">ECI1 Products</a> )   |
| Background:       | This gene encodes a member of the hydratase/isomerase superfamily. The protein encoded is a key mitochondrial enzyme involved in beta-oxidation of unsaturated fatty acids. It catalyzes the transformation of 3-cis and 3-trans-enoyl-CoA esters arising during the stepwise degradation of cis-, mono-, and polyunsaturated fatty acids to the 2-trans-enoyl-CoA |

## Target Details

intermediates. Alternatively spliced transcript variants have been described.

Molecular Weight: Observed\_MW: 34 kDa  
Calculated\_MW: 30 kDa/32 kDa

Gene ID: 1632

UniProt: [P42126](#)

## Application Details

Application Notes: WB 1:500-1:2000 IF 1:50-1:200

Restrictions: For Research Use only

## Handling

Format: Liquid

Concentration: 1 mg/mL

Buffer: PBS with 0.02 % sodium azide, 50 % glycerol, pH 7.3

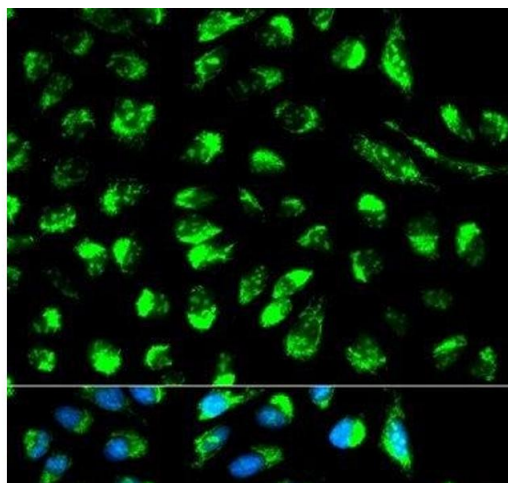
Preservative: Sodium azide

Precaution of Use: This product contains Sodium azide: a POISONOUS AND HAZARDOUS SUBSTANCE which should be handled by trained staff only.

Storage: -20 °C

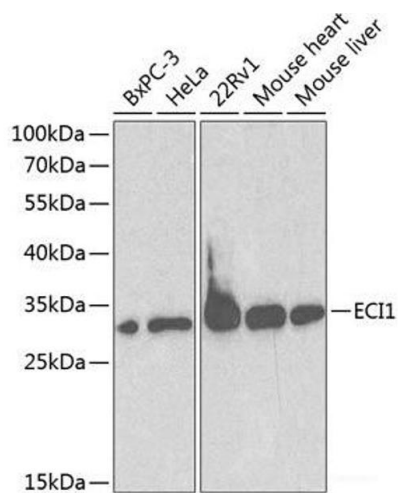
Storage Comment: Store at -20°C. Avoid freeze / thaw cycles.

## Images



### Immunofluorescence

**Image 1.** Immunofluorescence analysis of HeLa cells using ECI1 Polyclonal Antibody



Western Blotting

**Image 2.** Western blot analysis of extracts of various cell lines using ECI1 Polyclonal Antibody at dilution of 1:1000.