

Datasheet for ABIN7255944  
**anti-SHMT2 antibody**



[Go to Product page](#)

6 Images

Overview

Quantity:	200 µL
Target:	SHMT2
Reactivity:	Human, Mouse, Rat
Host:	Rabbit
Clonality:	Polyclonal
Conjugate:	This SHMT2 antibody is un-conjugated
Application:	Western Blotting (WB), Immunohistochemistry (IHC), Immunofluorescence (IF)

Product Details

Immunogen:	Recombinant fusion protein of human SHMT2 (NP_005403.2).
Isotype:	IgG
Characteristics:	Polyclonal Antibody
Purification:	Affinity purification

Target Details

Target:	SHMT2
Alternative Name:	SHMT2 ( <a href="#">SHMT2 Products</a> )
Background:	This gene encodes the mitochondrial form of a pyridoxal phosphate-dependent enzyme that catalyzes the reversible reaction of serine and tetrahydrofolate to glycine and 5,10-methylene tetrahydrofolate. The encoded product is primarily responsible for glycine synthesis. The activity of the encoded protein has been suggested to be the primary source of intracellular

## Target Details

---

glycine. The gene which encodes the cytosolic form of this enzyme is located on chromosome 17. Alternative splicing results in multiple transcript variants.

Molecular Weight: Observed\_MW: 52 kDa  
Calculated\_MW: 53 kDa/54 kDa/55 kDa

Gene ID: 6472

UniProt: [P34897](#)

## Application Details

---

Application Notes: WB 1:500-1:2000 IHC 1:50-1:200 IF 1:50-1:200

Restrictions: For Research Use only

## Handling

---

Format: Liquid

Concentration: 1 mg/mL

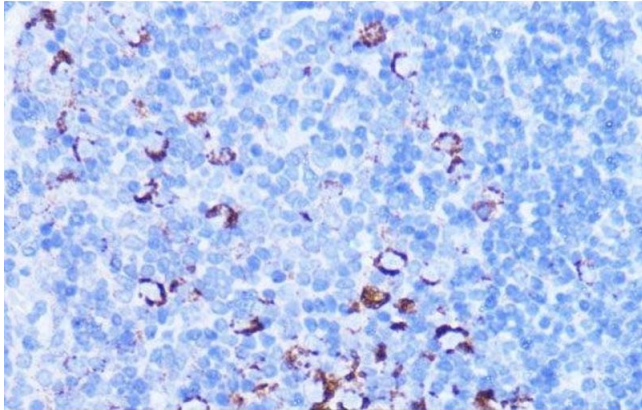
Buffer: PBS with 0.02 % sodium azide, 50 % glycerol, pH 7.3

Preservative: Sodium azide

Precaution of Use: This product contains Sodium azide: a POISONOUS AND HAZARDOUS SUBSTANCE which should be handled by trained staff only.

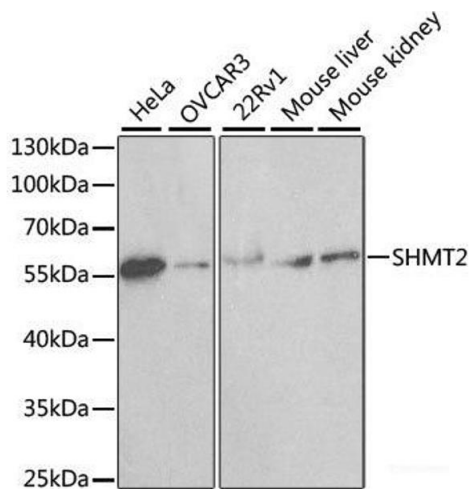
Storage: -20 °C

Storage Comment: Store at -20°C. Avoid freeze / thaw cycles.



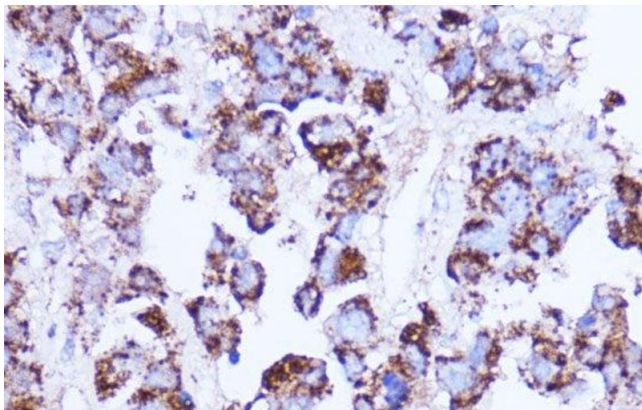
#### Immunohistochemistry (Paraffin-embedded Sections)

**Image 1.** Immunohistochemistry of paraffin-embedded Mouse spleen using SHMT2 Polyclonal Antibody at dilution of 1:100 (40x lens).



#### Western Blotting

**Image 2.** Western blot analysis of extracts of various cell lines using SHMT2 Polyclonal Antibody at dilution of 1:1000.



#### Immunohistochemistry (Paraffin-embedded Sections)

**Image 3.** Immunohistochemistry of paraffin-embedded Human liver cancer using SHMT2 Polyclonal Antibody at dilution of 1:100 (40x lens).

Please check the [product details page](#) for more images. Overall 6 images are available for ABIN7255944.