

Datasheet for ABIN7255952

anti-WDR1 antibody**1** Image[Go to Product page](#)

Overview

Quantity:	200 µL
Target:	WDR1
Reactivity:	Human, Mouse, Rat
Host:	Rabbit
Clonality:	Polyclonal
Conjugate:	This WDR1 antibody is un-conjugated
Application:	Western Blotting (WB)

Product Details

Immunogen:	Recombinant fusion protein of human WDR1 (NP_059830.1).
Isotype:	IgG
Characteristics:	Polyclonal Antibody
Purification:	Affinity purification

Target Details

Target:	WDR1
Alternative Name:	WDR1 (WDR1 Products)
Background:	This gene encodes a protein containing 9 WD repeats. WD repeats are approximately 30- to 40-amino acid domains containing several conserved residues, mostly including a trp-asn at the C-terminal end. WD domains are involved in protein-protein interactions. The encoded protein may help induce the disassembly of actin filaments. Two transcript variants encoding different

Target Details

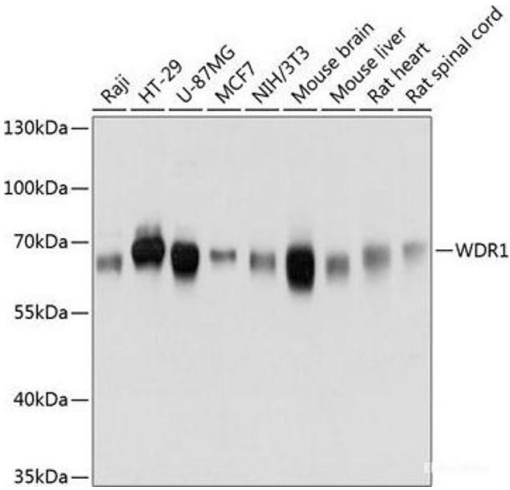
	isoforms have been found for this gene.
Molecular Weight:	Observed_MW: 68 kDa Calculated_MW: 50 kDa/66 kDa
Gene ID:	9948
UniProt:	O75083
Pathways:	Sensory Perception of Sound

Application Details

Application Notes:	WB 1:500-1:2000
Restrictions:	For Research Use only

Handling

Format:	Liquid
Concentration:	1 mg/mL
Buffer:	PBS with 0.02 % sodium azide, 50 % glycerol, pH 7.3
Preservative:	Sodium azide
Precaution of Use:	This product contains Sodium azide: a POISONOUS AND HAZARDOUS SUBSTANCE which should be handled by trained staff only.
Storage:	-20 °C
Storage Comment:	Store at -20°C. Avoid freeze / thaw cycles.



Western Blotting

Image 1. Western blot analysis of extracts of various cell lines using WDR1 Polyclonal Antibody at dilution of 1:3000.