

Datasheet for ABIN7255954

anti-MED21 antibody[Go to Product page](#)**1** Image

Overview

Quantity:	200 µL
Target:	MED21
Reactivity:	Human, Mouse, Rat
Host:	Rabbit
Clonality:	Polyclonal
Conjugate:	This MED21 antibody is un-conjugated
Application:	Western Blotting (WB)

Product Details

Immunogen:	Recombinant fusion protein of human MED21 (NP_004255.2).
Isotype:	IgG
Characteristics:	Polyclonal Antibody
Purification:	Affinity purification

Target Details

Target:	MED21
Alternative Name:	MED21 (MED21 Products)
Background:	This gene encodes a member of the mediator complex subunit 21 family. The encoded protein interacts with the human RNA polymerase II holoenzyme and is involved in transcriptional regulation of RNA polymerase II transcribed genes. A pseudogene of this gene is located on chromosome 8. Alternative splicing results in multiple transcript variants.

Target Details

Molecular Weight:	Observed_MW: 16 kDa
	Calculated_MW: 15 kDa
Gene ID:	9412
UniProt:	Q13503
Pathways:	Stem Cell Maintenance , Regulation of Lipid Metabolism by PPARalpha

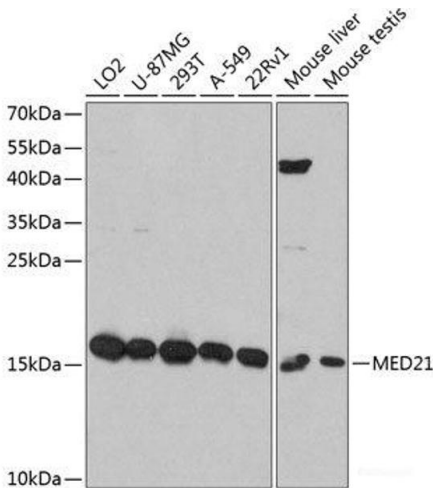
Application Details

Application Notes:	WB 1:500-1:2000
Restrictions:	For Research Use only

Handling

Format:	Liquid
Concentration:	1 mg/mL
Buffer:	PBS with 0.02 % sodium azide, 50 % glycerol, pH 7.3
Preservative:	Sodium azide
Precaution of Use:	This product contains Sodium azide: a POISONOUS AND HAZARDOUS SUBSTANCE which should be handled by trained staff only.
Storage:	-20 °C
Storage Comment:	Store at -20°C. Avoid freeze / thaw cycles.

Images



Western Blotting

Image 1. Western blot analysis of extracts of various cell lines using MED21 Polyclonal Antibody at dilution of 1:3000.