



Datasheet for ABIN7255960

## anti-PPIH antibody



[Go to Product page](#)

### 1 Image

#### Overview

Quantity:	200 µL
Target:	PPIH
Reactivity:	Human, Mouse, Rat
Host:	Rabbit
Clonality:	Polyclonal
Conjugate:	This PPIH antibody is un-conjugated
Application:	Western Blotting (WB)

#### Product Details

Immunogen:	Recombinant fusion protein of human PPIH (NP_006338.1).
Isotype:	IgG
Characteristics:	Polyclonal Antibody
Purification:	Affinity purification

#### Target Details

Target:	PPIH
Alternative Name:	PPIH ( <a href="#">PPIH Products</a> )
Background:	The protein encoded by this gene is a member of the peptidyl-prolyl cis-trans isomerase (PPIase) family. PPIases catalyze the cis-trans isomerization of proline imidic peptide bonds in oligopeptides and accelerate the folding of proteins. This protein is a specific component of the complex that includes pre-mRNA processing factors PRPF3, PRPF4, and PRPF18, as well as

## Target Details

---

U4/U5/U6 tri-snRNP. This protein has been shown to possess PPlase activity and may act as a protein chaperone that mediates the interactions between different proteins inside the spliceosome.

Molecular Weight: Observed\_MW: 19 kDa  
Calculated\_MW: 14 kDa/19 kDa

Gene ID: 10465

UniProt: [O43447](#)

## Application Details

---

Application Notes: WB 1:500-1:2000

Restrictions: For Research Use only

## Handling

---

Format: Liquid

Concentration: 1 mg/mL

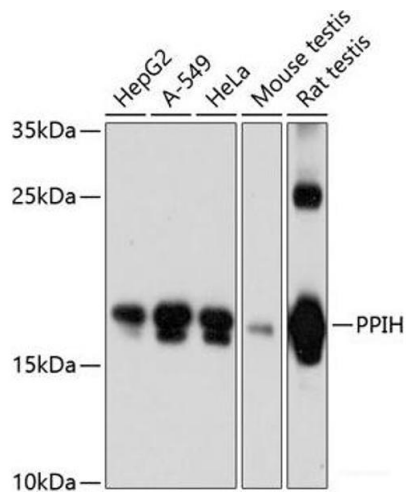
Buffer: PBS with 0.02 % sodium azide, 50 % glycerol, pH 7.3

Preservative: Sodium azide

Precaution of Use: This product contains Sodium azide: a POISONOUS AND HAZARDOUS SUBSTANCE which should be handled by trained staff only.

Storage: -20 °C

Storage Comment: Store at -20°C. Avoid freeze / thaw cycles.



### Western Blotting

**Image 1.** Western blot analysis of extracts of various cell lines using PPIH Polyclonal Antibody at dilution of 1:3000.