

Datasheet for ABIN725600
anti-tau antibody (AA 681-758)[Go to Product page](#)

3 Images

Overview

Quantity:	100 µL
Target:	tau
Binding Specificity:	AA 681-758
Reactivity:	Human, Mouse, Rat
Host:	Rabbit
Clonality:	Polyclonal
Conjugate:	This tau antibody is un-conjugated
Application:	Western Blotting (WB), ELISA, Immunofluorescence (Paraffin-embedded Sections) (IF (p)), Immunofluorescence (Cultured Cells) (IF (cc)), Immunohistochemistry (Paraffin-embedded Sections) (IHC (p)), Flow Cytometry (FACS), Immunohistochemistry (Frozen Sections) (IHC (fro))

Product Details

Immunogen:	KLH conjugated synthetic peptide derived from human Tau protein
Isotype:	IgG
Cross-Reactivity:	Human, Mouse, Rat
Predicted Reactivity:	Rabbit
Purification:	Purified by Protein A.

Target Details

Target:	tau
---------	-----

Target Details

Abstract: [tau Products](#)

Background: Synonyms: TAU, MSTD, PPND, DDPAC, MAPTL, MTBT1, MTBT2, FTDP-17, PPP1R103, Microtubule-associated protein tau, Neurofibrillary tangle protein, Paired helical filament-tau, PHF-tau, MAPT

Background: Promotes microtubule assembly and stability, and might be involved in the establishment and maintenance of neuronal polarity. The C-terminus binds axonal microtubules while the N-terminus binds neural plasma membrane components, suggesting that tau functions as a linker protein between both. Axonal polarity is predetermined by TAU/MAPT localization (in the neuronal cell) in the domain of the cell body defined by the centrosome. The short isoforms allow plasticity of the cytoskeleton whereas the longer isoforms may preferentially play a role in its stabilization.

Gene ID: 4137

UniProt: [P10636](#)

Application Details

Application Notes: WB 1:300-5000
ELISA 1:500-1000
FCM 1:20-100
IHC-P 1:200-400
IHC-F 1:100-500
IF(IHC-P) 1:50-200
IF(IHC-F) 1:50-200
IF(ICC) 1:50-200

Restrictions: For Research Use only

Handling

Format: Liquid

Concentration: 1 µg/µL

Buffer: 0.01M TBS(pH 7.4) with 1 % BSA, 0.02 % Proclin300 and 50 % Glycerol.

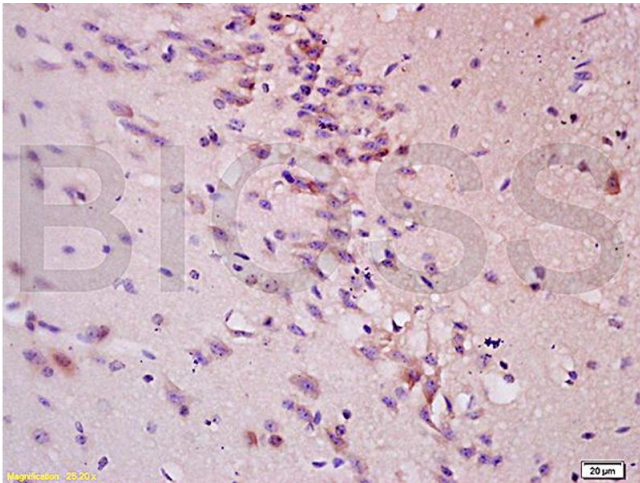
Preservative: ProClin

Precaution of Use: This product contains ProClin: a POISONOUS AND HAZARDOUS SUBSTANCE, which should be handled by trained staff only.

Handling

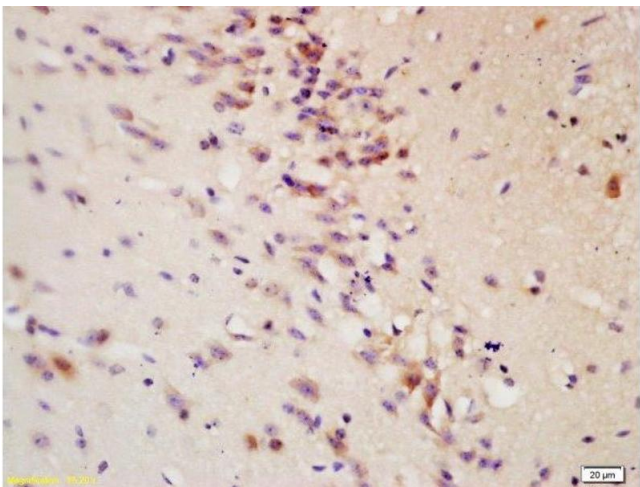
Storage:	4 °C,-20 °C
Storage Comment:	Shipped at 4°C. Store at -20°C for one year. Avoid repeated freeze/thaw cycles.
Expiry Date:	12 months

Images



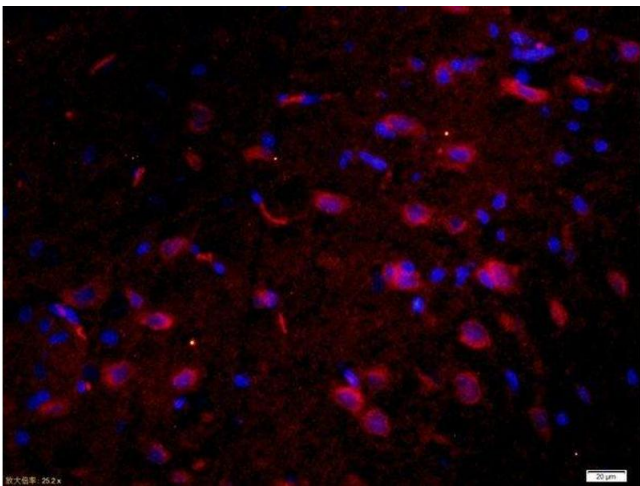
Immunohistochemistry

Image 1. Formalin-fixed and paraffin embedded: rat brain tissue labeled with Anti-Tau protein Polyclonal Antibody (ABIN725600), Unconjugated at 1:200 followed by conjugation to the secondary antibody and DAB staining



Immunohistochemistry (Paraffin-embedded Sections)

Image 2. Formalin-fixed and paraffin embedded: rat brain tissue labeled with Anti-Tau protein Polyclonal Antibody , Unconjugated at 1:200 followed by conjugation to the secondary antibody and DAB staining



Immunofluorescence (Paraffin-embedded Sections)

Image 3. Paraformaldehyde-fixed, paraffin embedded rat brain, Antigen retrieval by boiling in sodium citrate buffer (pH6) for 15min, Block endogenous peroxidase by 3% hydrogen peroxide for 30 minutes, Blocking buffer (normal goat serum) at 37°C for 20min, Antibody incubation with Tau protein Polyclonal Antibody, Unconjugated at 1:200 overnight at 4°C, followed by a conjugated secondary Goat Anti-Rabbit IgG, Cy3 conjugated-Cy3)used at 1:200 dilution

for 40 minutes at 37°C. DAPI(5ug/ml) was used to stain the cell nuclei.