

Datasheet for ABIN7256002

anti-AKR7A2 antibody**3** Images[Go to Product page](#)

Overview

Quantity:	200 µL
Target:	AKR7A2
Reactivity:	Human, Mouse
Host:	Rabbit
Clonality:	Polyclonal
Conjugate:	This AKR7A2 antibody is un-conjugated
Application:	Western Blotting (WB), Immunohistochemistry (IHC), Immunofluorescence (IF)

Product Details

Immunogen:	Recombinant fusion protein of human AKR7A2 (NP_003680.2).
Isotype:	IgG
Characteristics:	Polyclonal Antibody
Purification:	Affinity purification

Target Details

Target:	AKR7A2
Alternative Name:	AKR7A2 (AKR7A2 Products)
Background:	The protein encoded by this gene belongs to the aldo/keto reductase (AKR) superfamily and AKR7 family, which are involved in the detoxification of aldehydes and ketones. The AKR7 family consists of 3 genes that are present in a cluster on the p arm of chromosome 1. This protein, thought to be localized in the golgi, catalyzes the NADPH-dependent reduction of

Target Details

succinic semialdehyde to the endogenous neuromodulator, gamma-hydroxybutyrate. It may also function as a detoxication enzyme in the reduction of aflatoxin B1 and 2-carboxybenzaldehyde. Alternative splicing results in multiple transcript variants.

Molecular Weight: Observed_MW: 35 kDa
Calculated_MW: 39 kDa

Gene ID: 8574

UniProt: [O43488](#)

Application Details

Application Notes: WB 1:500-1:2000 IHC 1:50-1:200 IF 1:10-1:100

Restrictions: For Research Use only

Handling

Format: Liquid

Concentration: 1 mg/mL

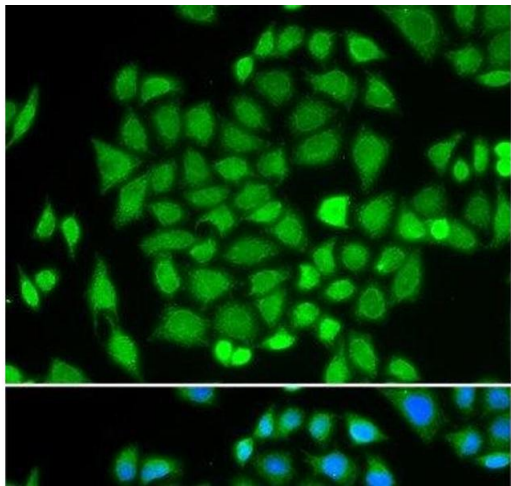
Buffer: PBS with 0.02 % sodium azide, 50 % glycerol, pH 7.3

Preservative: Sodium azide

Precaution of Use: This product contains Sodium azide: a POISONOUS AND HAZARDOUS SUBSTANCE which should be handled by trained staff only.

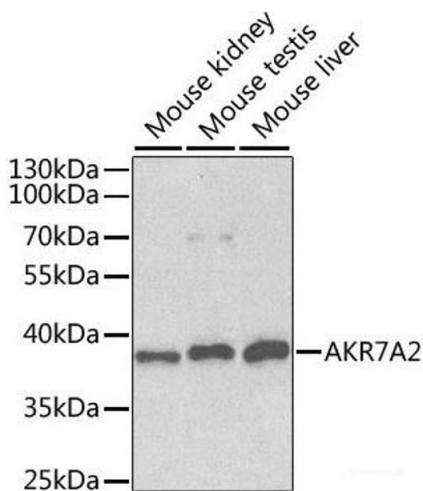
Storage: -20 °C

Storage Comment: Store at -20°C. Avoid freeze / thaw cycles.



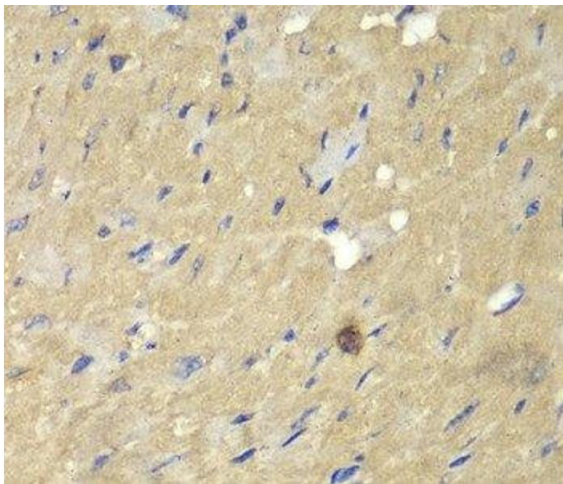
Immunofluorescence

Image 1. Immunofluorescence analysis of HeLa cells using AKR7A2 Polyclonal Antibody



Western Blotting

Image 2. Western blot analysis of extracts of various cell lines using AKR7A2 Polyclonal Antibody at dilution of 1:1000.



Immunohistochemistry (Paraffin-embedded Sections)

Image 3. Immunohistochemistry of paraffin-embedded Mouse heart using AKR7A2 Polyclonal Antibody at dilution of 1:100 (40x lens).