



Datasheet for ABIN7256016

## anti-IL7R antibody



[Go to Product page](#)

### 2 Images

#### Overview

Quantity:	200 µL
Target:	IL7R
Reactivity:	Human, Mouse, Rat
Host:	Rabbit
Clonality:	Polyclonal
Conjugate:	This IL7R antibody is un-conjugated
Application:	Western Blotting (WB), Immunofluorescence (IF)

#### Product Details

Immunogen:	Recombinant fusion protein of human CD127 (NP_002176.2).
Isotype:	IgG
Characteristics:	Polyclonal Antibody
Purification:	Affinity purification

#### Target Details

Target:	IL7R
Alternative Name:	CD127 ( <a href="#">IL7R Products</a> )
Background:	The protein encoded by this gene is a receptor for interleukin 7 (IL7). The function of this receptor requires the interleukin 2 receptor, gamma chain (IL2RG), which is a common gamma chain shared by the receptors of various cytokines, including interleukins 2, 4, 7, 9, and 15. This protein has been shown to play a critical role in V(D)J recombination during lymphocyte

## Target Details

---

development. Defects in this gene may be associated with severe combined immunodeficiency (SCID). Alternatively spliced transcript variants have been found.

Molecular Weight: Observed\_MW: 75 kDa  
Calculated\_MW: 28 kDa/29 kDa/34 kDa/51 kDa

Gene ID: 3575

UniProt: [P16871](#)

Pathways: [JAK-STAT Signaling](#), [Regulation of Leukocyte Mediated Immunity](#), [Production of Molecular Mediator of Immune Response](#), [Regulation of Cell Size](#)

## Application Details

---

Application Notes: WB 1:500-1:2000 IF 1:20-1:50

Restrictions: For Research Use only

## Handling

---

Format: Liquid

Concentration: 1 mg/mL

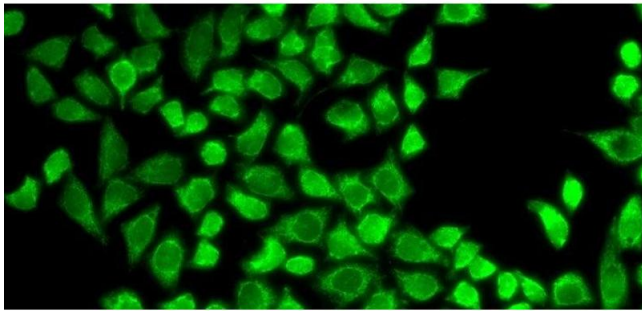
Buffer: PBS with 0.02 % sodium azide, 50 % glycerol, pH 7.3

Preservative: Sodium azide

Precaution of Use: This product contains Sodium azide: a POISONOUS AND HAZARDOUS SUBSTANCE which should be handled by trained staff only.

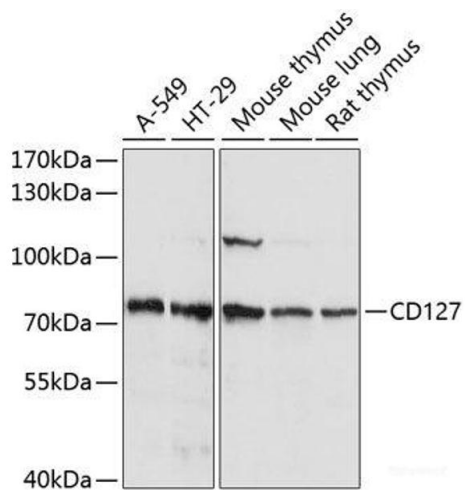
Storage: -20 °C

Storage Comment: Store at -20°C. Avoid freeze / thaw cycles.



### Immunofluorescence

**Image 1.** Immunofluorescence analysis of HeLa cells using CD127 Polyclonal Antibody



### Western Blotting

**Image 2.** Western blot analysis of extracts of various cell lines using CD127 Polyclonal Antibody at dilution of 1:1000.