



Datasheet for ABIN7256038

## anti-KLRC1 antibody



[Go to Product page](#)

### 1 Image

#### Overview

Quantity:	200 µL
Target:	KLRC1
Reactivity:	Mouse
Host:	Rabbit
Clonality:	Polyclonal
Conjugate:	This KLRC1 antibody is un-conjugated
Application:	Western Blotting (WB)

#### Product Details

Immunogen:	Recombinant fusion protein of human KLRC1 (NP_015567.1).
Isotype:	IgG
Characteristics:	Polyclonal Antibody
Purification:	Affinity purification

#### Target Details

Target:	KLRC1
Alternative Name:	KLRC1 ( <a href="#">KLRC1 Products</a> )
Background:	Natural killer (NK) cells are lymphocytes that can mediate lysis of certain tumor cells and virus-infected cells without previous activation. They can also regulate specific humoral and cell-mediated immunity. The protein encoded by this gene belongs to the killer cell lectin-like receptor family, also called NKG2 family, which is a group of transmembrane proteins

## Target Details

---

preferentially expressed in NK cells. This family of proteins is characterized by the type II membrane orientation and the presence of a C-type lectin domain. This protein forms a complex with another family member, KLRD1/CD94, and has been implicated in the recognition of the MHC class I HLA-E molecules in NK cells. The genes of NKG2 family members form a killer cell lectin-like receptor gene cluster on chromosome 12. Multiple alternatively spliced transcript variants encoding distinct isoforms have been observed.

---

Molecular Weight:	Observed_MW: 26 kDa Calculated_MW: 24 kDa/26 kDa
-------------------	---

---

Gene ID:	3821
----------	------

---

UniProt:	<a href="#">P26715</a>
----------	------------------------

---

## Application Details

---

Application Notes:	WB 1:500-1:2000
--------------------	-----------------

---

Restrictions:	For Research Use only
---------------	-----------------------

---

## Handling

---

Format:	Liquid
---------	--------

---

Concentration:	1 mg/mL
----------------	---------

---

Buffer:	PBS with 0.02 % sodium azide, 50 % glycerol, pH 7.3
---------	---

---

Preservative:	Sodium azide
---------------	--------------

---

Precaution of Use:	This product contains Sodium azide: a POISONOUS AND HAZARDOUS SUBSTANCE which should be handled by trained staff only.
--------------------	--

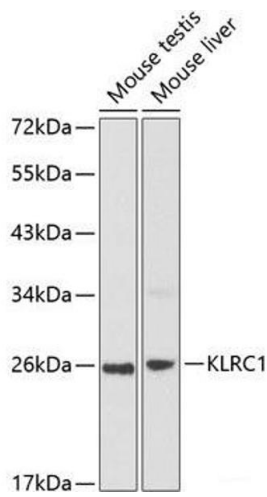
---

Storage:	-20 °C
----------	--------

---

Storage Comment:	Store at -20°C. Avoid freeze / thaw cycles.
------------------	---

---



### Western Blotting

**Image 1.** Western blot analysis of extracts of various cell lines using KLRC1 Polyclonal Antibody at dilution of 1:1000.