

Datasheet for ABIN7256068
anti-SLC25A19 antibody

2 Images

[Go to Product page](#)

Overview

Quantity:	200 µL
Target:	SLC25A19
Reactivity:	Human, Mouse, Rat
Host:	Rabbit
Clonality:	Polyclonal
Conjugate:	This SLC25A19 antibody is un-conjugated
Application:	Western Blotting (WB), Immunofluorescence (IF)

Product Details

Immunogen:	Recombinant fusion protein of human SLC25A19 (NP_068380.3).
Isotype:	IgG
Characteristics:	Polyclonal Antibody
Purification:	Affinity purification

Target Details

Target:	SLC25A19
Alternative Name:	SLC25A19 (SLC25A19 Products)
Background:	<p>This gene encodes a mitochondrial protein that is a member of the solute carrier family. Although this protein was initially thought to be the mitochondrial deoxynucleotide carrier involved in the uptake of deoxynucleotides into the matrix of the mitochondria, further studies have demonstrated that this protein instead functions as the mitochondrial thiamine</p>

Target Details

pyrophosphate carrier, which transports thiamine pyrophosphates into mitochondria. Mutations in this gene cause microcephaly, Amish type, a metabolic disease that results in severe congenital microcephaly, severe 2-ketoglutaric aciduria, and death within the first year. Multiple alternatively spliced variants, encoding the same protein, have been identified for this gene.

Molecular Weight:	Observed_MW: 36 kDa Calculated_MW: 29 kDa/35 kDa
-------------------	---

Gene ID:	60386
----------	-------

UniProt:	Q9HC21
----------	------------------------

Application Details

Application Notes:	WB 1:500-1:2000 IF 1:50-1:200
--------------------	-------------------------------

Restrictions:	For Research Use only
---------------	-----------------------

Handling

Format:	Liquid
---------	--------

Concentration:	1 mg/mL
----------------	---------

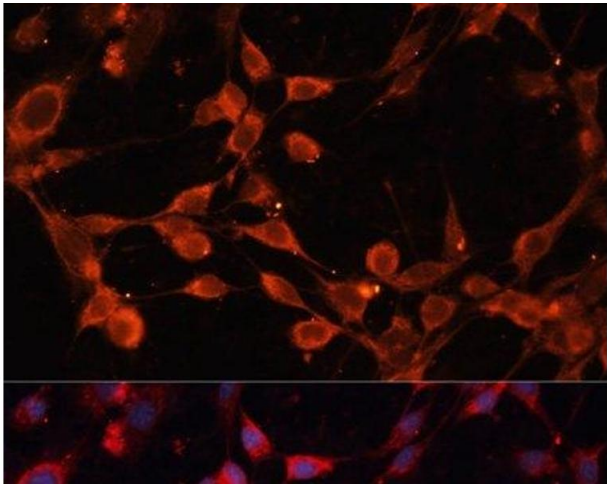
Buffer:	PBS with 0.02 % sodium azide, 50 % glycerol, pH 7.3
---------	---

Preservative:	Sodium azide
---------------	--------------

Precaution of Use:	This product contains Sodium azide: a POISONOUS AND HAZARDOUS SUBSTANCE which should be handled by trained staff only.
--------------------	--

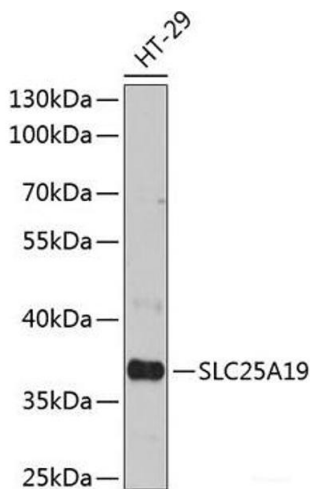
Storage:	-20 °C
----------	--------

Storage Comment:	Store at -20°C. Avoid freeze / thaw cycles.
------------------	---



Immunofluorescence

Image 1. Immunofluorescence analysis of NIH/3T3 cells using SLC25A19 Polyclonal Antibody at dilution of 1:100. Blue: DAPI for nuclear staining.



Western Blotting

Image 2. Western blot analysis of extracts of HT-29 cells using SLC25A19 Polyclonal Antibody at dilution of 1:3000.