



Datasheet for ABIN7256074 anti-CD3D antibody



[Go to Product page](#)

2 Images

Overview

Quantity:	200 µL
Target:	CD3D
Reactivity:	Human, Rat
Host:	Rabbit
Clonality:	Polyclonal
Conjugate:	This CD3D antibody is un-conjugated
Application:	Immunohistochemistry (IHC), Immunofluorescence (IF)

Product Details

Immunogen:	Recombinant fusion protein of human CD3D (NP_000723.1).
Isotype:	IgG
Characteristics:	Polyclonal Antibody
Purification:	Affinity purification

Target Details

Target:	CD3D
Alternative Name:	CD3D (CD3D Products)
Background:	The protein encoded by this gene is part of the T-cell receptor/CD3 complex (TCR/CD3 complex) and is involved in T-cell development and signal transduction. The encoded membrane protein represents the delta subunit of the CD3 complex, and along with four other CD3 subunits, binds either TCR alpha/beta or TCR gamma/delta to form the TCR/CD3 complex

Target Details

on the surface of T-cells. Defects in this gene are a cause of severe combined immunodeficiency autosomal recessive T-cell-negative/B-cell-positive/NK-cell-positive (SCIDBNK). Two transcript variants encoding different isoforms have been found for this gene. Other variants may also exist, but the full-length nature of their transcripts has yet to be defined.

Gene ID: 915

UniProt: [P04234](#)

Pathways: [TCR Signaling, CXCR4-mediated Signaling Events](#)

Application Details

Application Notes: IHC 1:50-1:100 IF 1:50-1:100

Restrictions: For Research Use only

Handling

Format: Liquid

Concentration: 1 mg/mL

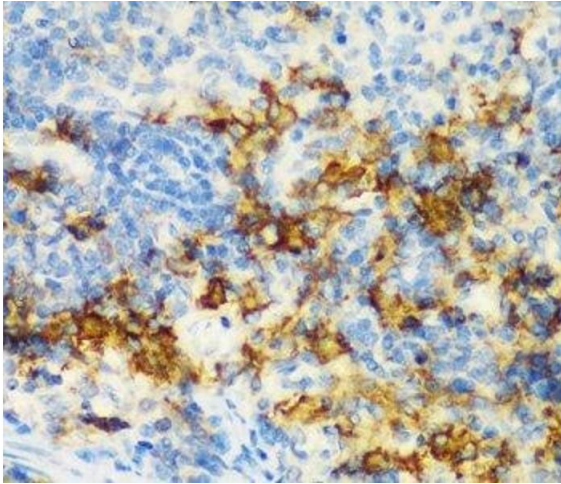
Buffer: PBS with 0.02 % sodium azide, 50 % glycerol, pH 7.3

Preservative: Sodium azide

Precaution of Use: This product contains Sodium azide: a POISONOUS AND HAZARDOUS SUBSTANCE which should be handled by trained staff only.

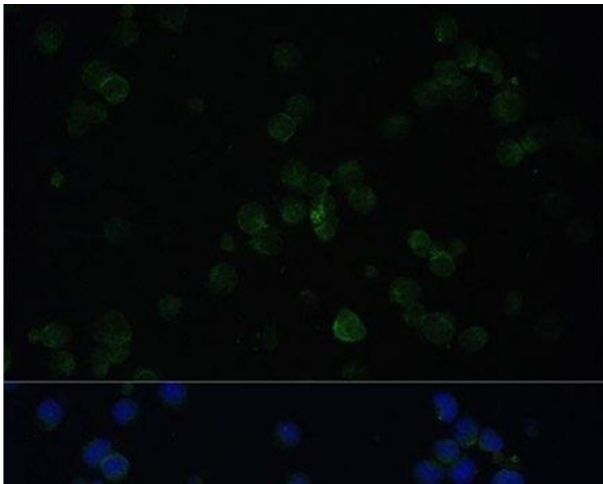
Storage: -20 °C

Storage Comment: Store at -20°C. Avoid freeze / thaw cycles.



Immunohistochemistry (Paraffin-embedded Sections)

Image 1. Immunohistochemistry of paraffin-embedded Rat spleen using CD3D Polyclonal Antibody at dilution of 1:200 (40x lens).



Immunofluorescence

Image 2. Immunofluorescence analysis of Jurkat cells using CD3D Polyclonal Antibody at dilution of 1:100. Blue: DAPI for nuclear staining.