

Datasheet for ABIN7256082

**anti-CGA antibody**

## 1 Image

[Go to Product page](#)

## Overview

Quantity:	200 µL
Target:	CGA
Reactivity:	Human, Mouse
Host:	Rabbit
Clonality:	Polyclonal
Conjugate:	This CGA antibody is un-conjugated
Application:	Western Blotting (WB)

## Product Details

Immunogen:	Recombinant fusion protein of human CGA (NP_000726.1).
Isotype:	IgG
Characteristics:	Polyclonal Antibody
Purification:	Affinity purification

## Target Details

Target:	CGA
Alternative Name:	CGA ( <a href="#">CGA Products</a> )
Background:	The four human glycoprotein hormones chorionic gonadotropin (CG), luteinizing hormone (LH), follicle stimulating hormone (FSH), and thyroid stimulating hormone (TSH) are dimers consisting of alpha and beta subunits that are associated noncovalently. The alpha subunits of these hormones are identical, however, their beta chains are unique and confer biological

## Target Details

specificity. The protein encoded by this gene is the alpha subunit and belongs to the glycoprotein hormones alpha chain family. Two transcript variants encoding different isoforms have been found for this gene.

Molecular Weight: Observed\_MW: 13 kDa  
Calculated\_MW: 13 kDa

Gene ID: 1081

UniProt: [P01215](#)

Pathways: [Metabolism of Steroid Hormones and Vitamin D](#), [Thyroid Hormone Synthesis](#), [Hormone Transport](#), [Peptide Hormone Metabolism](#)

## Application Details

Application Notes: WB 1:500-1:2000

Restrictions: For Research Use only

## Handling

Format: Liquid

Concentration: 1 mg/mL

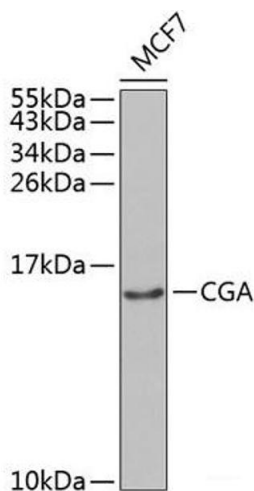
Buffer: PBS with 0.02 % sodium azide, 50 % glycerol, pH 7.3

Preservative: Sodium azide

Precaution of Use: This product contains Sodium azide: a POISONOUS AND HAZARDOUS SUBSTANCE which should be handled by trained staff only.

Storage: -20 °C

Storage Comment: Store at -20°C. Avoid freeze / thaw cycles.



Western Blotting

**Image 1.** Western blot analysis of extracts of MCF-7 cells using CGA Polyclonal Antibody at dilution of 1:1000.