

Datasheet for ABIN7256112
anti-Clathrin Heavy Chain (CLTC) antibody[Go to Product page](#)

2 Images

Overview

Quantity:	200 µL
Target:	Clathrin Heavy Chain (CLTC)
Reactivity:	Human, Mouse, Rat
Host:	Rabbit
Clonality:	Polyclonal
Conjugate:	Un-conjugated
Application:	Western Blotting (WB), Immunofluorescence (IF)

Product Details

Immunogen:	Recombinant fusion protein of human CLTC (NP_004850.1).
Isotype:	IgG
Characteristics:	Polyclonal Antibody
Purification:	Affinity purification

Target Details

Target:	Clathrin Heavy Chain (CLTC)
Alternative Name:	CLTC (CLTC Products)
Background:	Clathrin is a major protein component of the cytoplasmic face of intracellular organelles, called coated vesicles and coated pits. These specialized organelles are involved in the intracellular trafficking of receptors and endocytosis of a variety of macromolecules. The basic subunit of the clathrin coat is composed of three heavy chains and three light chains.

Target Details

Molecular Weight:	Observed_MW: 191 kDa Calculated_MW: 187 kDa/191 kDa
-------------------	--

Gene ID:	1213
----------	------

UniProt:	Q00610
----------	------------------------

Application Details

Application Notes:	WB 1:500-1:2000 IF 1:50-1:200
--------------------	-------------------------------

Restrictions:	For Research Use only
---------------	-----------------------

Handling

Format:	Liquid
---------	--------

Concentration:	1 mg/mL
----------------	---------

Buffer:	PBS with 0.02 % sodium azide, 50 % glycerol, pH 7.3
---------	---

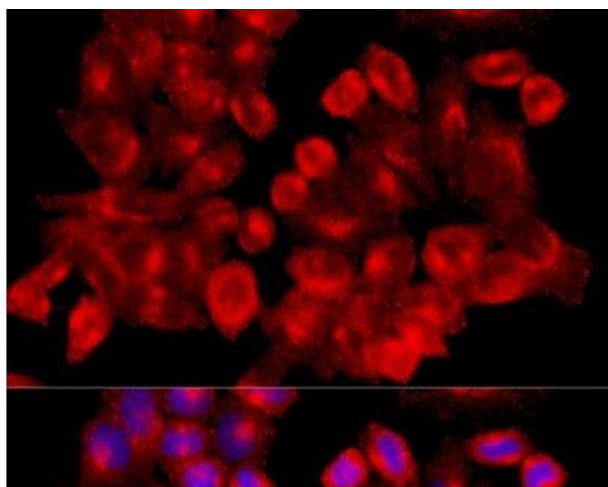
Preservative:	Sodium azide
---------------	--------------

Precaution of Use:	This product contains Sodium azide: a POISONOUS AND HAZARDOUS SUBSTANCE which should be handled by trained staff only.
--------------------	--

Storage:	-20 °C
----------	--------

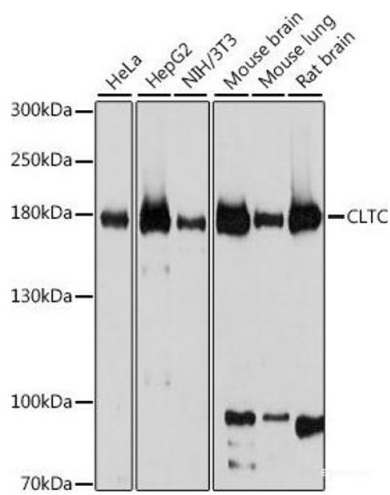
Storage Comment:	Store at -20°C. Avoid freeze / thaw cycles.
------------------	---

Images



Immunofluorescence

Image 1. Immunofluorescence analysis of HeLa cells using CLTC Polyclonal Antibody at dilution of 1:100 (40x lens). Blue: DAPI for nuclear staining.



Western Blotting

Image 2. Western blot analysis of extracts of various cell lines using CLTC Polyclonal Antibody at dilution of 1:1000.