

Datasheet for ABIN7256196

**anti-TYR antibody**

5 Images

[Go to Product page](#)

## Overview

Quantity:	200 µL
Target:	TYR
Reactivity:	Human, Mouse, Rat
Host:	Rabbit
Clonality:	Polyclonal
Conjugate:	This TYR antibody is un-conjugated
Application:	Western Blotting (WB), Immunofluorescence (IF), Immunohistochemistry (IHC)

## Product Details

Immunogen:	Recombinant fusion protein of human TYR (NP_000363.1).
Isotype:	IgG
Characteristics:	Polyclonal Antibody
Purification:	Affinity purification

## Target Details

Target:	TYR
Alternative Name:	TYR ( <a href="#">TYR Products</a> )
Background:	The enzyme encoded by this gene catalyzes the first 2 steps, and at least 1 subsequent step, in the conversion of tyrosine to melanin. The enzyme has both tyrosine hydroxylase and dopa oxidase catalytic activities, and requires copper for function. Mutations in this gene result in oculocutaneous albinism, and nonpathologic polymorphisms result in skin pigmentation

## Target Details

variation. The human genome contains a pseudogene similar to the 3' half of this gene.

Molecular Weight: Observed\_MW: 80 kDa  
Calculated\_MW: 42 kDa/60 kDa

Gene ID: 7299

UniProt: [P14679](#)

## Application Details

Application Notes: WB 1:500-1:2000 IHC 1:50-1:200 IF 1:50-1:200

Restrictions: For Research Use only

## Handling

Format: Liquid

Concentration: 1 mg/mL

Buffer: PBS with 0.02 % sodium azide, 50 % glycerol, pH 7.3

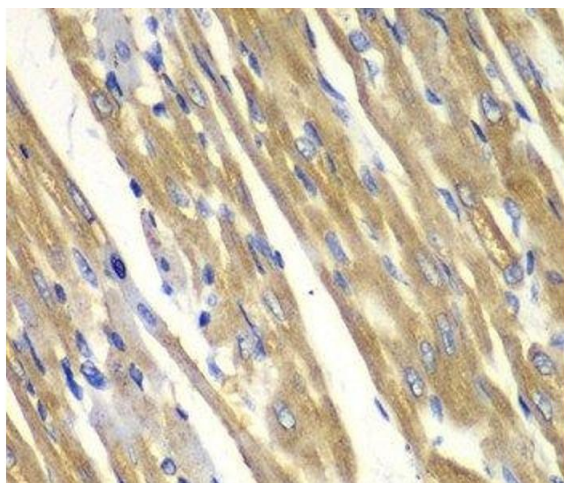
Preservative: Sodium azide

Precaution of Use: This product contains Sodium azide: a POISONOUS AND HAZARDOUS SUBSTANCE which should be handled by trained staff only.

Storage: -20 °C

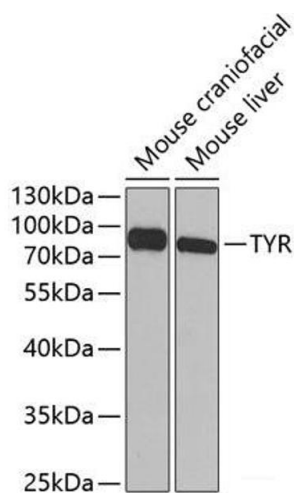
Storage Comment: Store at -20°C. Avoid freeze / thaw cycles.

## Images



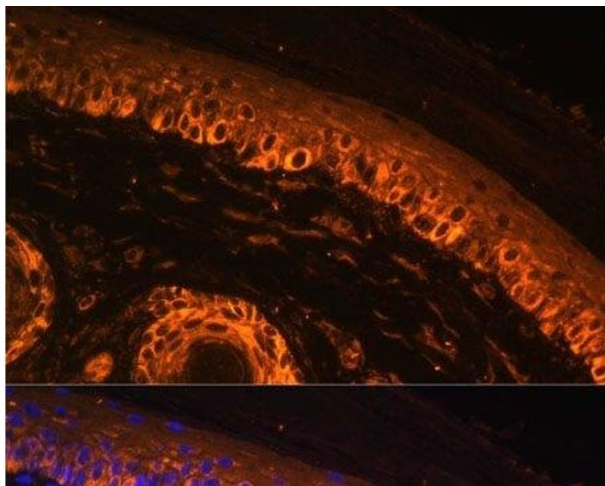
### Immunohistochemistry (Paraffin-embedded Sections)

**Image 1.** Immunohistochemistry of paraffin-embedded Rat heart using TYR Polyclonal Antibody at dilution of 1:100 (40x lens).



### Western Blotting

**Image 2.** Western blot analysis of extracts of various cell lines using TYR Polyclonal Antibody at dilution of 1:1000.



### Immunofluorescence

**Image 3.** Immunofluorescence analysis of Rat skin using TYR Polyclonal Antibody at dilution of 1:100. Blue: DAPI for nuclear staining.

Please check the [product details page](#) for more images. Overall 5 images are available for ABIN7256196.