

Datasheet for ABIN7256210
anti-ARHGEF2 antibody[Go to Product page](#)

1 Image

Overview

Quantity:	200 µL
Target:	ARHGEF2
Reactivity:	Mouse
Host:	Rabbit
Clonality:	Polyclonal
Conjugate:	This ARHGEF2 antibody is un-conjugated
Application:	Immunohistochemistry (IHC)

Product Details

Immunogen:	Recombinant fusion protein of human ARHGEF2 (NP_004714.2).
Isotype:	IgG
Characteristics:	Polyclonal Antibody
Purification:	Affinity purification

Target Details

Target:	ARHGEF2
Alternative Name:	ARHGEF2 (ARHGEF2 Products)
Background:	Rho GTPases play a fundamental role in numerous cellular processes that are initiated by extracellular stimuli that work through G protein coupled receptors. The encoded protein may form complex with G proteins and stimulate rho-dependent signals. Alternatively spliced transcript variants encoding different isoforms have been identified.

Target Details

Gene ID:	9181
UniProt:	Q92974
Pathways:	Negative Regulation of intrinsic apoptotic Signaling

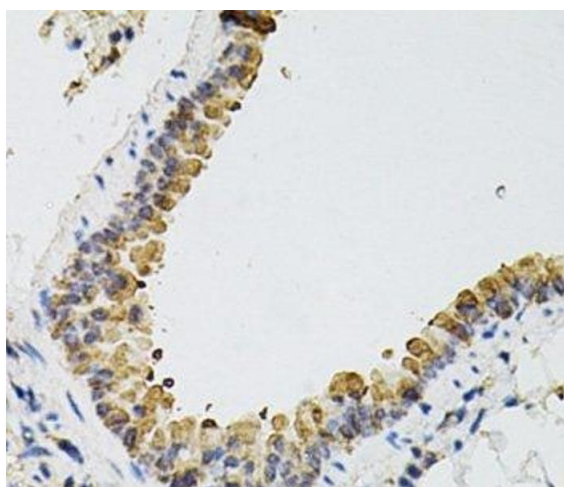
Application Details

Application Notes:	IHC 1:50-1:100
Restrictions:	For Research Use only

Handling

Format:	Liquid
Concentration:	1 mg/mL
Buffer:	PBS with 0.02 % sodium azide, 50 % glycerol, pH 7.3
Preservative:	Sodium azide
Precaution of Use:	This product contains Sodium azide: a POISONOUS AND HAZARDOUS SUBSTANCE which should be handled by trained staff only.
Storage:	-20 °C
Storage Comment:	Store at -20°C. Avoid freeze / thaw cycles.

Images



Immunohistochemistry (Paraffin-embedded Sections)

Image 1. Immunohistochemistry of paraffin-embedded Mouse lung using ARHGEF2 Polyclonal Antibody at dilution of 1:100 (40x lens).