

Datasheet for ABIN7256264

anti-HOXC9 antibody[Go to Product page](#)**1** Image

Overview

| | |
|--------------|--------------------------------------|
| Quantity: | 200 µL |
| Target: | HOXC9 |
| Reactivity: | Mouse |
| Host: | Rabbit |
| Clonality: | Polyclonal |
| Conjugate: | This HOXC9 antibody is un-conjugated |
| Application: | Western Blotting (WB) |

Product Details

| | |
|------------------|--|
| Immunogen: | Recombinant fusion protein of human HOXC9 (NP_008828.1). |
| Isotype: | IgG |
| Characteristics: | Polyclonal Antibody |
| Purification: | Affinity purification |

Target Details

| | |
|-------------------|--|
| Target: | HOXC9 |
| Alternative Name: | HOXC9 (HOXC9 Products) |
| Background: | This gene belongs to the homeobox family of genes. The homeobox genes encode a highly conserved family of transcription factors that play an important role in morphogenesis in all multicellular organisms. Mammals possess four similar homeobox gene clusters, HOXA, HOXB, HOXC and HOXD, which are located on different chromosomes and consist of 9 to 11 genes |

Target Details

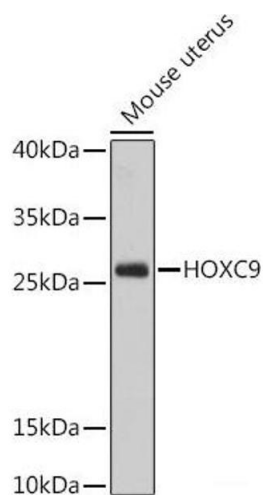
| | |
|-------------------|--|
| | arranged in tandem. This gene is one of several homeobox HOXC genes located in a cluster on chromosome 12. |
| Molecular Weight: | Observed_MW: 27 kDa Calculated_MW: 29 kDa |
| Gene ID: | 3225 |
| UniProt: | P31274 |

Application Details

| | |
|--------------------|-----------------------|
| Application Notes: | WB 1:1000-1:2000 |
| Restrictions: | For Research Use only |

Handling

| | |
|--------------------|--|
| Format: | Liquid |
| Concentration: | 1 mg/mL |
| Buffer: | PBS with 0.02 % sodium azide, 50 % glycerol, pH 7.3 |
| Preservative: | Sodium azide |
| Precaution of Use: | This product contains Sodium azide: a POISONOUS AND HAZARDOUS SUBSTANCE which should be handled by trained staff only. |
| Storage: | -20 °C |
| Storage Comment: | Store at -20°C. Avoid freeze / thaw cycles. |



Western Blotting

Image 1. Western blot analysis of extracts of Mouse uterus using HOXC9 Polyclonal Antibody at dilution of 1:1000.