

Datasheet for ABIN7256266

anti-CKB antibody**1** Image[Go to Product page](#)

Overview

Quantity:	200 µL
Target:	CKB
Reactivity:	Mouse, Rat
Host:	Rabbit
Clonality:	Polyclonal
Conjugate:	This CKB antibody is un-conjugated
Application:	Western Blotting (WB)

Product Details

Immunogen:	Recombinant fusion protein of human CKB (NP_001814.2).
Isotype:	IgG
Characteristics:	Polyclonal Antibody
Purification:	Affinity purification

Target Details

Target:	CKB
Alternative Name:	CKB (CKB Products)
Background:	The protein encoded by this gene is a cytoplasmic enzyme involved in energy homeostasis. The encoded protein reversibly catalyzes the transfer of phosphate between ATP and various phosphogens such as creatine phosphate. It acts as a homodimer in brain as well as in other tissues, and as a heterodimer with a similar muscle isozyme in heart. The encoded protein is a

Target Details

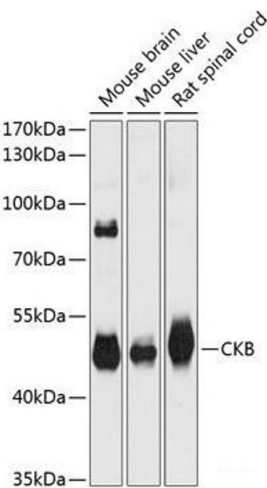
	member of the ATP:guanido phosphotransferase protein family. A pseudogene of this gene has been characterized.
Molecular Weight:	Observed_MW: 43 kDa Calculated_MW: 42 kDa
Gene ID:	1152
UniProt:	P12277

Application Details

Application Notes:	WB 1:1000-1:3000
Restrictions:	For Research Use only

Handling

Format:	Liquid
Concentration:	1 mg/mL
Buffer:	PBS with 0.02 % sodium azide, 50 % glycerol, pH 7.3
Preservative:	Sodium azide
Precaution of Use:	This product contains Sodium azide: a POISONOUS AND HAZARDOUS SUBSTANCE which should be handled by trained staff only.
Storage:	-20 °C
Storage Comment:	Store at -20°C. Avoid freeze / thaw cycles.



Western Blotting

Image 1. Western blot analysis of extracts of various cell lines using CKB Polyclonal Antibody at dilution of 1:3000.