



[Go to Product page](#)

Datasheet for ABIN725630

anti-alpha Tubulin antibody (AA 375-448)

2 Images

2 Publications

Overview

| | |
|----------------------|---|
| Quantity: | 100 µL |
| Target: | alpha Tubulin (TUBA1) |
| Binding Specificity: | AA 375-448 |
| Reactivity: | Human, Mouse, Rat, Plant |
| Host: | Rabbit |
| Clonality: | Polyclonal |
| Conjugate: | This alpha Tubulin antibody is un-conjugated |
| Application: | Western Blotting (WB), ELISA, Immunohistochemistry (Paraffin-embedded Sections) (IHC (p)), Flow Cytometry (FACS), Immunofluorescence (Paraffin-embedded Sections) (IF (p)) |

Product Details

| | |
|-----------------------|--|
| Immunogen: | KLH conjugated synthetic peptide derived from human Tubulin-alpha 1 |
| Isotype: | IgG |
| Specificity: | Will recognize many forms of alpha tubulin, Tubulin alpha-1A chain, Tubulin alpha-4A chain etc |
| Cross-Reactivity: | Human, Mouse, Plant, Rat |
| Predicted Reactivity: | Cow, Sheep |
| Purification: | Purified by Protein A. |

Target Details

| | |
|---------|-----------------------|
| Target: | alpha Tubulin (TUBA1) |
|---------|-----------------------|

Target Details

| | |
|-------------------|---|
| Alternative Name: | Tubulin-alpha (TUBA1 Products) |
| Background: | Synonyms: TUBA1, H2-ALPHA, Tubulin alpha-4A chain, Alpha-tubulin 1, Testis-specific alpha-tubulin, Tubulin H2-alpha, Tubulin alpha-1 chain, TUBA4A Background: Tubulin is the major constituent of microtubules. It binds two moles of GTP, one at an exchangeable site on the beta chain and one at a non-exchangeable site on the alpha chain. |
| Gene ID: | 7277 |
| UniProt: | P68366 |
| Pathways: | Microtubule Dynamics |

Application Details

| | |
|--------------------|--|
| Application Notes: | WB 1:300-5000 ELISA 1:500-1000 FCM 1:20-100 IHC-P 1:200-400 IF(IHC-P) 1:50-200 |
| Restrictions: | For Research Use only |

Handling

| | |
|--------------------|--|
| Format: | Liquid |
| Concentration: | 1 µg/µL |
| Buffer: | 0.01M TBS(pH 7.4) with 1 % BSA, 0.02 % Proclin300 and 50 % Glycerol. |
| Preservative: | ProClin |
| Precaution of Use: | This product contains ProClin: a POISONOUS AND HAZARDOUS SUBSTANCE, which should be handled by trained staff only. |
| Storage: | 4 °C, -20 °C |
| Storage Comment: | Shipped at 4°C. Store at -20°C for one year. Avoid repeated freeze/thaw cycles. |
| Expiry Date: | 12 months |

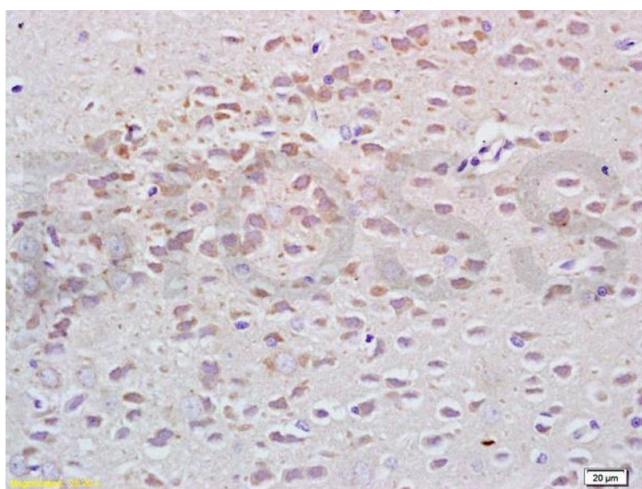
Publications

| | |
|-------------------|---|
| Product cited in: | Wang, Guan, Lu, Jin, Cai, Wang, Wang: "Clinical and tumor significance of tropomyosin-1 |
|-------------------|---|

expression levels in renal cell carcinoma." in: **Oncology reports**, Vol. 33, Issue 3, pp. 1326-34, (2015) ([PubMed](#)).

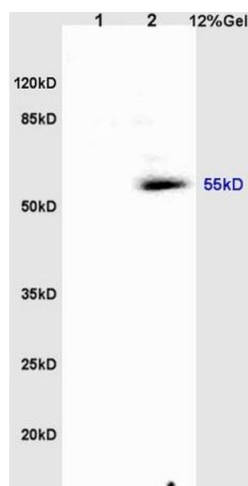
Fang, Jiang, Yu, Ye, Wan: "Differentially expression of Tua1, a tubulin-encoding gene, during flowering of tea plant *Camellia sinensis* (L.) O. Kuntze using cDNA amplified fragment length polymorphism technique." in: **Acta biochimica et biophysica Sinica**, Vol. 38, Issue 9, pp. 653-62, (2006) ([PubMed](#)).

Images



Immunohistochemistry

Image 1. Formalin-fixed and paraffin embedded rat brain tissue labeled with Anti-Tubulin-alpha Polyclonal Antibody, Unconjugated (ABIN725630) at 1:200, followed by conjugation to the secondary antibody and DAB staining



SDS-PAGE

Image 2. L1 rat heart lysates, L2 rat brain lysates probed: Anti-Tubulin-alpha (ABIN725630) at 1:200 in 4 °C. Followed by conjugation to secondary antibody at 1:3000 90min in 37 °C. Predicted and observed band size: 55kDa