

Datasheet for ABIN7256308

**anti-Cullin 4B antibody**[Go to Product page](#)**1** Image

## Overview

Quantity:	200 µL
Target:	Cullin 4B (CUL4B)
Reactivity:	Human, Mouse
Host:	Rabbit
Clonality:	Polyclonal
Conjugate:	This Cullin 4B antibody is un-conjugated
Application:	Western Blotting (WB)

## Product Details

Immunogen:	Recombinant fusion protein of human CUL4B (NP_003579.3).
Isotype:	IgG
Characteristics:	Polyclonal Antibody
Purification:	Affinity purification

## Target Details

Target:	Cullin 4B (CUL4B)
Alternative Name:	CUL4B ( <a href="#">CUL4B Products</a> )
Background:	This gene is a member of the cullin family. The encoded protein forms a complex that functions as an E3 ubiquitin ligase and catalyzes the polyubiquitination of specific protein substrates in the cell. The protein interacts with a ring finger protein, and is required for the proteolysis of several regulators of DNA replication including chromatin licensing and DNA replication factor 1

## Target Details

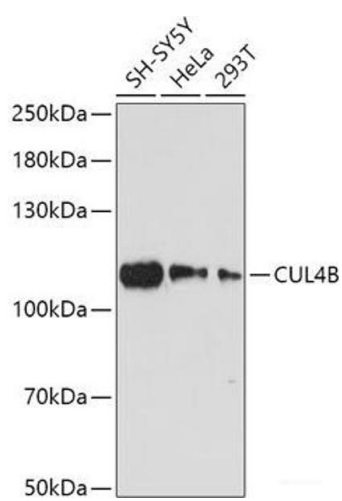
	and cyclin E. Multiple transcript variants encoding different isoforms have been found for this gene.
Molecular Weight:	Observed_MW: 105 kDa Calculated_MW: 84 kDa/102 kDa/103 kDa
Gene ID:	8450
UniProt:	<a href="#">Q13620</a>

## Application Details

Application Notes:	WB 1:500-1:2000
Restrictions:	For Research Use only

## Handling

Format:	Liquid
Concentration:	1 mg/mL
Buffer:	PBS with 0.02 % sodium azide, 50 % glycerol, pH 7.3
Preservative:	Sodium azide
Precaution of Use:	This product contains Sodium azide: a POISONOUS AND HAZARDOUS SUBSTANCE which should be handled by trained staff only.
Storage:	-20 °C
Storage Comment:	Store at -20°C. Avoid freeze / thaw cycles.



Western Blotting

**Image 1.** Western blot analysis of extracts of various cell lines using CUL4B Polyclonal Antibody at dilution of 1:1000.