



Datasheet for ABIN7256336

anti-CSN2 antibody



[Go to Product page](#)

1 Image

Overview

Quantity:	200 µL
Target:	CSN2
Reactivity:	Human
Host:	Rabbit
Clonality:	Polyclonal
Conjugate:	This CSN2 antibody is un-conjugated
Application:	Western Blotting (WB)

Product Details

Immunogen:	A synthetic peptide of human CSN2 (NP_001882.1).
Isotype:	IgG
Characteristics:	Polyclonal Antibody
Purification:	Affinity purification

Target Details

Target:	CSN2
Alternative Name:	CSN2 (CSN2 Products)
Background:	This gene is a member of the beta casein family. There are two types of casein protein, beta (encoded by this gene) and kappa, both of which are secreted in human milk. Beta casein is the principal protein in human milk and the primary source of essential amino acids for a suckling infant. Beta and kappa casein proteins acting together form spherical micelles which bind

Target Details

within them important dietary minerals, such as calcium and phosphorous. Alternative splicing results in multiple transcript variants.

Molecular Weight: Observed_MW: 30 kDa
Calculated_MW: 25 kDa

Gene ID: 1447

UniProt: [P05814](#)

Application Details

Application Notes: WB 1:500-1:2000

Restrictions: For Research Use only

Handling

Format: Liquid

Concentration: 1 mg/mL

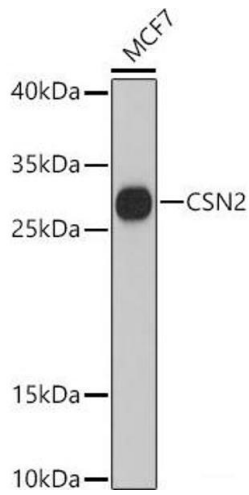
Buffer: PBS with 0.02 % sodium azide, 50 % glycerol, pH 7.3

Preservative: Sodium azide

Precaution of Use: This product contains Sodium azide: a POISONOUS AND HAZARDOUS SUBSTANCE which should be handled by trained staff only.

Storage: -20 °C

Storage Comment: Store at -20°C. Avoid freeze / thaw cycles.



Western Blotting

Image 1. Western blot analysis of extracts of MCF7 cells using CSN2 Polyclonal Antibody at dilution of 1:3000.