

Datasheet for ABIN7256352  
**anti-ONECUT1 antibody**[Go to Product page](#)

## 1 Image

## Overview

Quantity:	200 µL
Target:	ONECUT1
Reactivity:	Human, Mouse, Rat
Host:	Rabbit
Clonality:	Polyclonal
Conjugate:	This ONECUT1 antibody is un-conjugated
Application:	Western Blotting (WB)

## Product Details

Immunogen:	Recombinant fusion protein of human ONECUT1 (NP_004489.1).
Isotype:	IgG
Characteristics:	Polyclonal Antibody
Purification:	Affinity purification

## Target Details

Target:	ONECUT1
Alternative Name:	ONECUT1 ( <a href="#">ONECUT1 Products</a> )
Background:	This gene encodes a member of the Cut homeobox family of transcription factors. Expression of the encoded protein is enriched in the liver, where it stimulates transcription of liver-expressed genes, and antagonizes glucocorticoid-stimulated gene transcription. This gene may influence a variety of cellular processes including glucose metabolism, cell cycle regulation, and

Target Details

	it may also be associated with cancer. Alternative splicing results in multiple transcript variants.
Molecular Weight:	Observed_MW: 51 kDa Calculated_MW: 51 kDa
Gene ID:	3175
UniProt:	<a href="#">Q9UBC0</a>

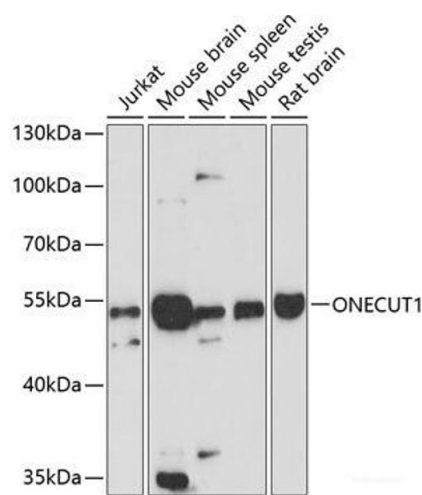
Application Details

Application Notes:	WB 1:500-1:2000
Restrictions:	For Research Use only

Handling

Format:	Liquid
Concentration:	1 mg/mL
Buffer:	PBS with 0.02 % sodium azide, 50 % glycerol, pH 7.3
Preservative:	Sodium azide
Precaution of Use:	This product contains Sodium azide: a POISONOUS AND HAZARDOUS SUBSTANCE which should be handled by trained staff only.
Storage:	-20 °C
Storage Comment:	Store at -20°C. Avoid freeze / thaw cycles.

Images



**Western Blotting**

**Image 1.** Western blot analysis of extracts of various cell lines using ONECUT1 Polyclonal Antibody at dilution of 1:3000.