



## Datasheet for ABIN7256368 anti-ANGEL2 antibody



[Go to Product page](#)

### 1 Image

#### Overview

Quantity:	200 µL
Target:	ANGEL2
Reactivity:	Human
Host:	Rabbit
Clonality:	Polyclonal
Conjugate:	This ANGEL2 antibody is un-conjugated
Application:	Western Blotting (WB)

#### Product Details

Immunogen:	Recombinant fusion protein of human ANGEL2 (NP_653168.2).
Isotype:	IgG
Characteristics:	Polyclonal Antibody
Purification:	Affinity purification

#### Target Details

Target:	ANGEL2
Alternative Name:	ANGEL2 ( <a href="#">ANGEL2 Products</a> )
Background:	ANGEL2 (Angel Homolog 2) is a Protein Coding gene. Diseases associated with ANGEL2 include Pontocerebellar Hypoplasia, Type 7 and Tritanopia. An important paralog of this gene is ANGEL1.

## Target Details

Molecular Weight:	Observed_MW: 62 kDa Calculated_MW: 42 kDa/62 kDa
Gene ID:	90806
UniProt:	<a href="#">Q5VTE6</a>

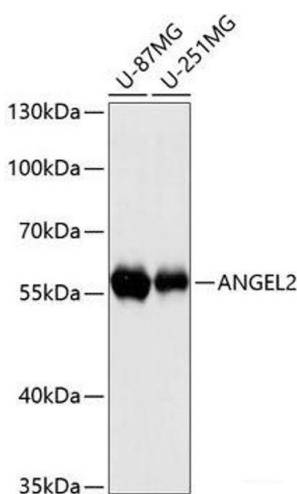
## Application Details

Application Notes:	WB 1:500-1:2000
Restrictions:	For Research Use only

## Handling

Format:	Liquid
Concentration:	1 mg/mL
Buffer:	PBS with 0.02 % sodium azide, 50 % glycerol, pH 7.3
Preservative:	Sodium azide
Precaution of Use:	This product contains Sodium azide: a POISONOUS AND HAZARDOUS SUBSTANCE which should be handled by trained staff only.
Storage:	-20 °C
Storage Comment:	Store at -20°C. Avoid freeze / thaw cycles.

## Images



### Western Blotting

**Image 1.** Western blot analysis of extracts of various cell lines using ANGEL2 Polyclonal Antibody at dilution of 1:3000.