

Datasheet for ABIN7256370

**anti-GPC4 antibody**

3 Images

[Go to Product page](#)

## Overview

Quantity:	200 µL
Target:	GPC4
Reactivity:	Human, Mouse
Host:	Rabbit
Clonality:	Polyclonal
Conjugate:	This GPC4 antibody is un-conjugated
Application:	Immunohistochemistry (IHC), Immunofluorescence (IF)

## Product Details

Immunogen:	Recombinant fusion protein of human GPC4 (NP_001439.2).
Isotype:	IgG
Characteristics:	Polyclonal Antibody
Purification:	Affinity purification

## Target Details

Target:	GPC4
Alternative Name:	GPC4 ( <a href="#">GPC4 Products</a> )
Background:	Cell surface heparan sulfate proteoglycans are composed of a membrane-associated protein core substituted with a variable number of heparan sulfate chains. Members of the glypican-related integral membrane proteoglycan family (GRIPS) contain a core protein anchored to the cytoplasmic membrane via a glycosyl phosphatidylinositol linkage. These proteins may play a

## Target Details

role in the control of cell division and growth regulation. The GPC4 gene is adjacent to the 3' end of GPC3 and may also play a role in Simpson-Golabi-Behmel syndrome.

Gene ID:	2239
UniProt:	<a href="#">O75487</a>
Pathways:	<a href="#">Glycosaminoglycan Metabolic Process</a>

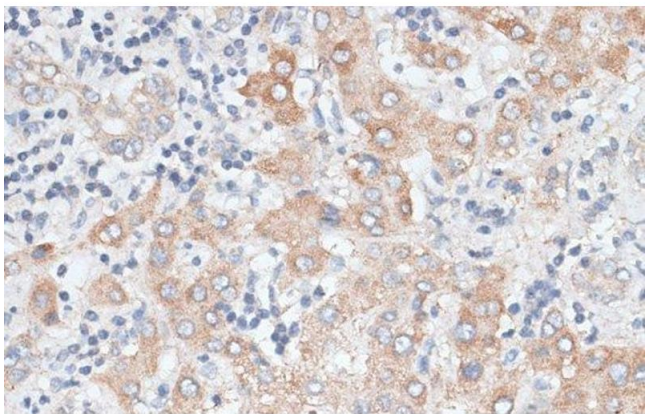
## Application Details

Application Notes:	IHC 1:50-1:200 IF 1:50-1:200
Restrictions:	For Research Use only

## Handling

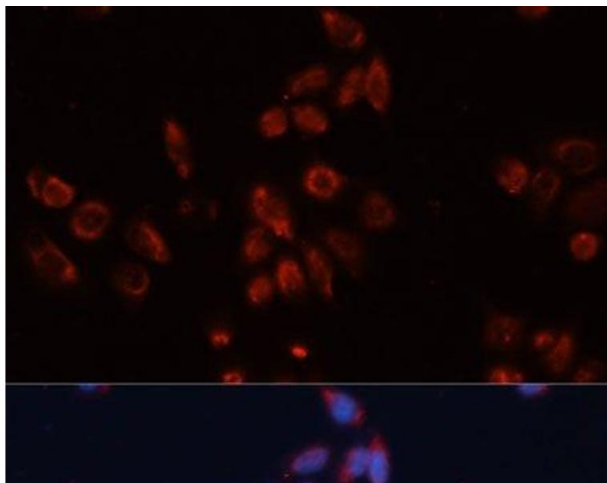
Format:	Liquid
Concentration:	1 mg/mL
Buffer:	PBS with 0.02 % sodium azide, 50 % glycerol, pH 7.3
Preservative:	Sodium azide
Precaution of Use:	This product contains Sodium azide: a POISONOUS AND HAZARDOUS SUBSTANCE which should be handled by trained staff only.
Storage:	-20 °C
Storage Comment:	Store at -20°C. Avoid freeze / thaw cycles.

## Images



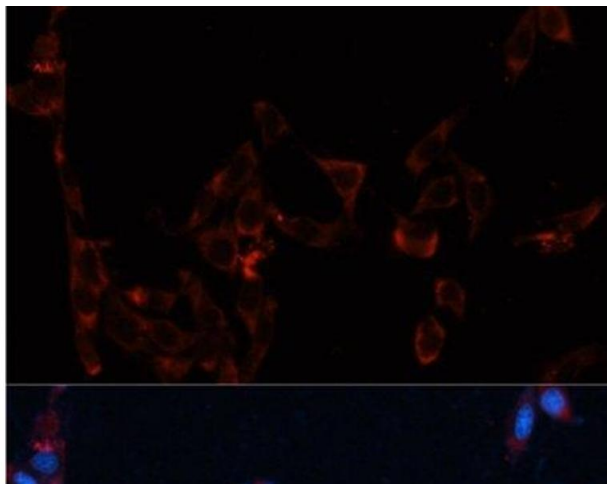
### Immunohistochemistry (Paraffin-embedded Sections)

**Image 1.** Immunohistochemistry of paraffin-embedded Human liver using GPC4 Polyclonal Antibody at dilution of 1:100 (40x lens).



#### Immunofluorescence

**Image 2.** Immunofluorescence analysis of HeLa cells using GPC4 Polyclonal Antibody at dilution of 1:100. Blue: DAPI for nuclear staining.



#### Immunofluorescence

**Image 3.** Immunofluorescence analysis of NIH/3T3 cells using GPC4 Polyclonal Antibody at dilution of 1:100. Blue: DAPI for nuclear staining.