

Datasheet for ABIN7256396

anti-PPM1J antibody[Go to Product page](#)**1** Image

Overview

Quantity:	200 µL
Target:	PPM1J
Reactivity:	Human, Mouse
Host:	Rabbit
Clonality:	Polyclonal
Conjugate:	This PPM1J antibody is un-conjugated
Application:	Western Blotting (WB)

Product Details

Immunogen:	Recombinant fusion protein of human PPM1J (NP_005158.5).
Isotype:	IgG
Characteristics:	Polyclonal Antibody
Purification:	Affinity purification

Target Details

Target:	PPM1J
Alternative Name:	PPM1J (PPM1J Products)
Background:	This gene encodes the serine/threonine protein phosphatase. The mouse homolog of this gene apparently belongs to the protein phosphatase 2C family of genes. The exact function of this gene is not yet known.

Target Details

Molecular Weight:	Observed_MW: 60 kDa
	Calculated_MW: 33 kDa/54 kDa
Gene ID:	333926
UniProt:	Q5JR12

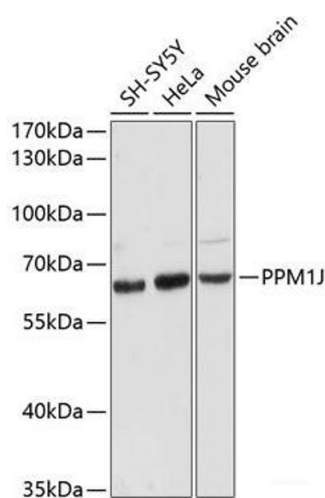
Application Details

Application Notes:	WB 1:500-1:2000
Restrictions:	For Research Use only

Handling

Format:	Liquid
Concentration:	1 mg/mL
Buffer:	PBS with 0.02 % sodium azide, 50 % glycerol, pH 7.3
Preservative:	Sodium azide
Precaution of Use:	This product contains Sodium azide: a POISONOUS AND HAZARDOUS SUBSTANCE which should be handled by trained staff only.
Storage:	-20 °C
Storage Comment:	Store at -20°C. Avoid freeze / thaw cycles.

Images



Western Blotting

Image 1. Western blot analysis of extracts of various cell lines using PPM1J Polyclonal Antibody at dilution of 1:3000.