

Datasheet for ABIN7256406

**anti-SULT1A2 antibody**[Go to Product page](#)**1** Image

## Overview

Quantity:	200 µL
Target:	SULT1A2
Reactivity:	Human, Mouse, Rat
Host:	Rabbit
Clonality:	Polyclonal
Conjugate:	This SULT1A2 antibody is un-conjugated
Application:	Western Blotting (WB)

## Product Details

Immunogen:	Recombinant fusion protein of human SULT1A2 (NP_001045.1).
Isotype:	IgG
Characteristics:	Polyclonal Antibody
Purification:	Affinity purification

## Target Details

Target:	SULT1A2
Alternative Name:	SULT1A2 ( <a href="#">SULT1A2 Products</a> )
Background:	Sulfotransferase enzymes catalyze the sulfate conjugation of many hormones, neurotransmitters, drugs, and xenobiotic compounds. These cytosolic enzymes are different in their tissue distributions and substrate specificities. The gene structure (number and length of exons) is similar among family members. This gene encodes one of two phenol

## Target Details

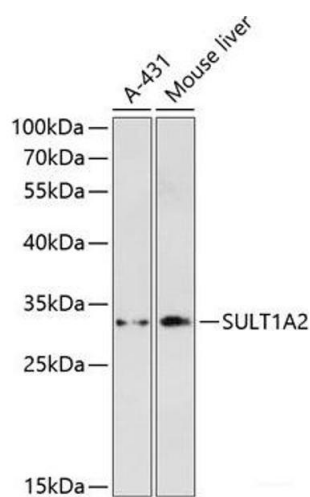
	sulfotransferases with thermostable enzyme activity. Two alternatively spliced variants that encode the same protein have been described.
Molecular Weight:	Observed_MW: 34 kDa Calculated_MW: 34 kDa
Gene ID:	6799
UniProt:	<a href="#">P50226</a>

## Application Details

Application Notes:	WB 1:500-1:2000
Restrictions:	For Research Use only

## Handling

Format:	Liquid
Concentration:	1 mg/mL
Buffer:	PBS with 0.02 % sodium azide, 50 % glycerol, pH 7.3
Preservative:	Sodium azide
Precaution of Use:	This product contains Sodium azide: a POISONOUS AND HAZARDOUS SUBSTANCE which should be handled by trained staff only.
Storage:	-20 °C
Storage Comment:	Store at -20°C. Avoid freeze / thaw cycles.



Western Blotting

**Image 1.** Western blot analysis of extracts of various cell lines using SULT1A2 Polyclonal Antibody at dilution of 1:3000.