

Datasheet for ABIN7256440

anti-RUFY3 antibody**1** Image[Go to Product page](#)

Overview

Quantity:	200 µL
Target:	RUFY3
Reactivity:	Mouse, Rat
Host:	Rabbit
Clonality:	Polyclonal
Conjugate:	This RUFY3 antibody is un-conjugated
Application:	Western Blotting (WB)

Product Details

Immunogen:	Recombinant fusion protein of human RUFY3 (NP_055776.1).
Isotype:	IgG
Characteristics:	Polyclonal Antibody
Purification:	Affinity purification

Target Details

Target:	RUFY3
Alternative Name:	RUFY3 (RUFY3 Products)
Background:	This gene encodes a RPIP8, UNC-14, and NESCA domain-containing protein that is required for maintenance of neuronal polarity. In addition, it has been implicated in mediation of gastric cancer cell migration and invasion via interaction with P21-activated kinase-1, which promotes its expression. The encoded protein localizes to F-actin-enriched invadopodia to induce

Target Details

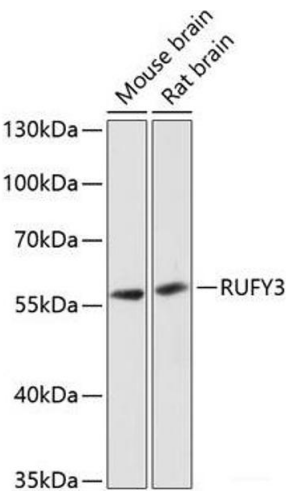
	formation of protrusions, thereby facilitating cell migration. Alternative splicing results in multiple transcript variants.
Molecular Weight:	Observed_MW: 56 kDa Calculated_MW: 52 kDa/55 kDa/64 kDa/70 kDa
Gene ID:	22902
UniProt:	Q7L099

Application Details

Application Notes:	WB 1:500-1:2000
Restrictions:	For Research Use only

Handling

Format:	Liquid
Concentration:	1 mg/mL
Buffer:	PBS with 0.02 % sodium azide, 50 % glycerol, pH 7.3
Preservative:	Sodium azide
Precaution of Use:	This product contains Sodium azide: a POISONOUS AND HAZARDOUS SUBSTANCE which should be handled by trained staff only.
Storage:	-20 °C
Storage Comment:	Store at -20°C. Avoid freeze / thaw cycles.



Western Blotting

Image 1. Western blot analysis of extracts of various cell lines using RUFY3 Polyclonal Antibody at dilution of 1:3000.