



[Go to Product page](#)

Datasheet for ABIN7256450

anti-SMC1B antibody

1 Image

Overview

Quantity:	200 µL
Target:	SMC1B
Reactivity:	Rat
Host:	Rabbit
Clonality:	Polyclonal
Conjugate:	This SMC1B antibody is un-conjugated
Application:	Western Blotting (WB)

Product Details

Immunogen:	Recombinant fusion protein of human SMC1B (NP_001278430.1).
Isotype:	IgG
Characteristics:	Polyclonal Antibody
Purification:	Affinity purification

Target Details

Target:	SMC1B
Alternative Name:	SMC1B (SMC1B Products)
Background:	SMC1B (Structural Maintenance Of Chromosomes 1B) is a Protein Coding gene. Diseases associated with SMC1B include Corneal Dystrophy, Subepithelial Mucinous and 46 Xx Gonadal Dysgenesis. Among its related pathways are Meiosis and Cell Cycle, Mitotic. An important paralog of this gene is SMC1A.

Target Details

Molecular Weight: Observed_MW: 144 kDa
Calculated_MW: 135 kDa/143 kDa

Gene ID: 27127

UniProt: [Q8NDV3](#)

Application Details

Application Notes: WB 1:500-1:1000

Restrictions: For Research Use only

Handling

Format: Liquid

Concentration: 1 mg/mL

Buffer: PBS with 0.02 % sodium azide, 50 % glycerol, pH 7.3

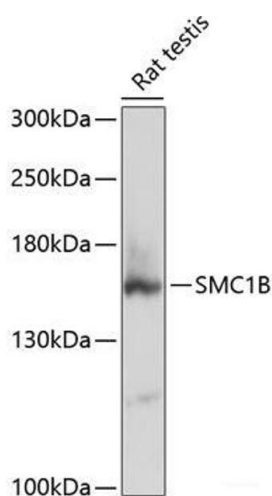
Preservative: Sodium azide

Precaution of Use: This product contains Sodium azide: a POISONOUS AND HAZARDOUS SUBSTANCE which should be handled by trained staff only.

Storage: -20 °C

Storage Comment: Store at -20°C. Avoid freeze / thaw cycles.

Images



Western Blotting

Image 1. Western blot analysis of extracts of Rat testis using SMC1B Polyclonal Antibody at dilution of 1:3000.