

Datasheet for ABIN7256500

anti-Septin 5 antibody

3 Images

[Go to Product page](#)

Overview

Quantity:	200 µL
Target:	Septin 5 (SEPT5)
Reactivity:	Human, Rat, Mouse
Host:	Rabbit
Clonality:	Polyclonal
Conjugate:	This Septin 5 antibody is un-conjugated
Application:	Immunohistochemistry (IHC), Immunofluorescence (IF)

Product Details

Immunogen:	Recombinant fusion protein of human 44079 (NP_002679.2).
Isotype:	IgG
Characteristics:	Polyclonal Antibody
Purification:	Affinity purification

Target Details

Target:	Septin 5 (SEPT5)
Alternative Name:	SEPT5 (SEPT5 Products)
Background:	This gene is a member of the septin gene family of nucleotide binding proteins, originally described in yeast as cell division cycle regulatory proteins. Septins are highly conserved in yeast, Drosophila, and mouse and appear to regulate cytoskeletal organization. Disruption of septin function disturbs cytokinesis and results in large multinucleate or polyploid cells. This

Target Details

gene is mapped to 22q11, the region frequently deleted in DiGeorge and velocardiofacial syndromes. A translocation involving the MLL gene and this gene has also been reported in patients with acute myeloid leukemia. Alternative splicing results in multiple transcript variants. The presence of a non-consensus polyA signal (AACAAAT) in this gene also results in read-through transcription into the downstream neighboring gene (GP1BB, platelet glycoprotein Ib), whereby larger, non-coding transcripts are produced.

Gene ID: 5413

UniProt: [Q99719](#)

Pathways: [Synaptic Vesicle Exocytosis](#)

Application Details

Application Notes: IHC 1:100-1:200 IF 1:50-1:200

Restrictions: For Research Use only

Handling

Format: Liquid

Concentration: 1 mg/mL

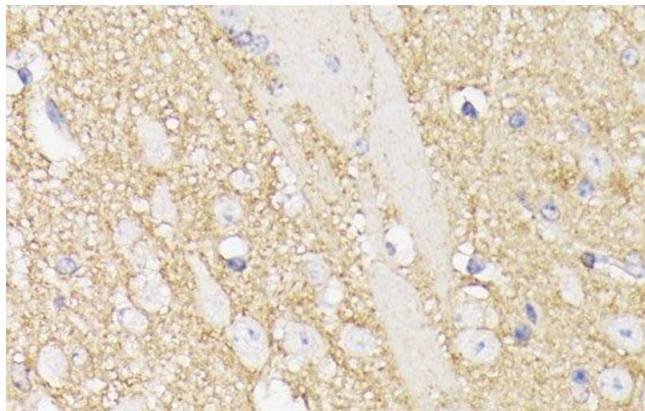
Buffer: PBS with 0.02 % sodium azide, 50 % glycerol, pH 7.3

Preservative: Sodium azide

Precaution of Use: This product contains Sodium azide: a POISONOUS AND HAZARDOUS SUBSTANCE which should be handled by trained staff only.

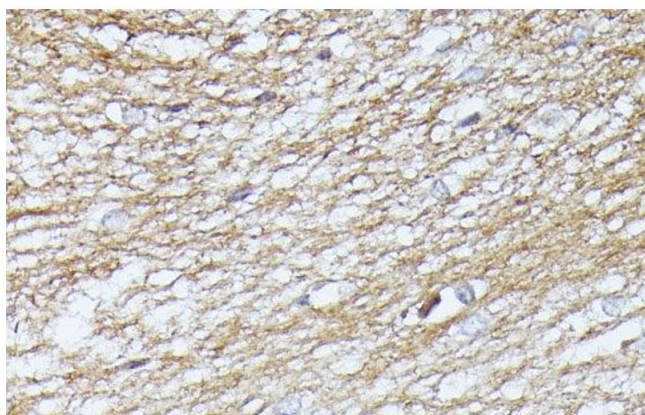
Storage: -20 °C

Storage Comment: Store at -20°C. Avoid freeze / thaw cycles.



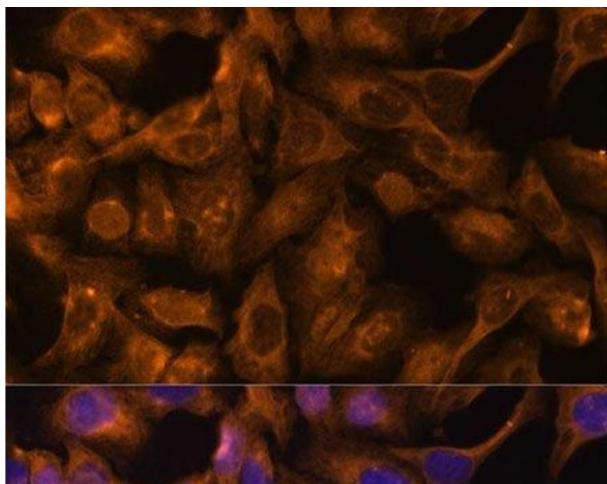
Immunohistochemistry (Paraffin-embedded Sections)

Image 1. Immunohistochemistry of paraffin-embedded Mouse brain using SEPT5 Polyclonal Antibody at dilution of 1:100 (40x lens).



Immunohistochemistry (Paraffin-embedded Sections)

Image 2. Immunohistochemistry of paraffin-embedded Rat brain using SEPT5 Polyclonal Antibody at dilution of 1:100 (40x lens).



Immunofluorescence

Image 3. Immunofluorescence analysis of U-2 OS cells using SEPT5 Polyclonal Antibody at dilution of 1:100. Blue: DAPI for nuclear staining.