

Datasheet for ABIN7256512

anti-GBP2 antibody**1** Image[Go to Product page](#)

Overview

Quantity:	200 µL
Target:	GBP2
Reactivity:	Human
Host:	Rabbit
Clonality:	Polyclonal
Conjugate:	This GBP2 antibody is un-conjugated
Application:	Western Blotting (WB)

Product Details

Immunogen:	Recombinant fusion protein of human GBP2 (NP_004111.2).
Isotype:	IgG
Characteristics:	Polyclonal Antibody
Purification:	Affinity purification

Target Details

Target:	GBP2
Alternative Name:	GBP2 (GBP2 Products)
Background:	This gene belongs to the guanine-binding protein (GBP) family, which includes interferon-induced proteins that can bind to guanine nucleotides (GMP, GDP and GTP). The encoded protein is a GTPase which hydrolyzes GTP, predominantly to GDP. The protein may play a role as a marker of squamous cell carcinomas.

Target Details

Molecular Weight:	Observed_MW: 67 kDa/70 kDa
	Calculated_MW: 67 kDa
Gene ID:	2634
UniProt:	P32456
Pathways:	Cellular Response to Molecule of Bacterial Origin

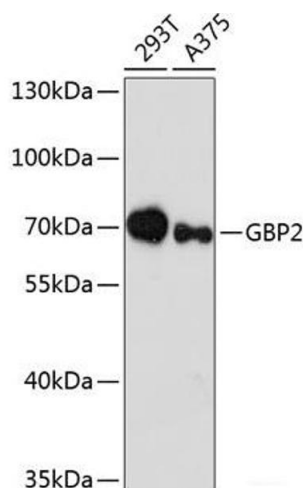
Application Details

Application Notes:	WB 1:500-1:2000
Restrictions:	For Research Use only

Handling

Format:	Liquid
Concentration:	1 mg/mL
Buffer:	PBS with 0.02 % sodium azide, 50 % glycerol, pH 7.3
Preservative:	Sodium azide
Precaution of Use:	This product contains Sodium azide: a POISONOUS AND HAZARDOUS SUBSTANCE which should be handled by trained staff only.
Storage:	-20 °C
Storage Comment:	Store at -20°C. Avoid freeze / thaw cycles.

Images



Western Blotting

Image 1. Western blot analysis of extracts of various cell lines using GBP2 Polyclonal Antibody at dilution of 1:3000.