



Datasheet for ABIN7256518 anti-RPL32 antibody



[Go to Product page](#)

6 Images

Overview

| | |
|--------------|--|
| Quantity: | 200 µL |
| Target: | RPL32 |
| Reactivity: | Human, Mouse, Rat |
| Host: | Rabbit |
| Clonality: | Polyclonal |
| Conjugate: | This RPL32 antibody is un-conjugated |
| Application: | Western Blotting (WB), Immunofluorescence (IF), Immunohistochemistry (IHC) |

Product Details

| | |
|------------------|--|
| Immunogen: | Recombinant fusion protein of human RPL32 (NP_000985.1). |
| Isotype: | IgG |
| Characteristics: | Polyclonal Antibody |
| Purification: | Affinity purification |

Target Details

| | |
|-------------------|--|
| Target: | RPL32 |
| Alternative Name: | RPL32 (RPL32 Products) |
| Background: | Ribosomes, the organelles that catalyze protein synthesis, consist of a small 40S subunit and a large 60S subunit. Together these subunits are composed of 4 RNA species and approximately 80 structurally distinct proteins. This gene encodes a ribosomal protein that is a component of the 60S subunit. The protein belongs to the L32E family of ribosomal proteins. It is located in |

Target Details

the cytoplasm. Although some studies have mapped this gene to 3q13.3-q21, it is believed to map to 3p25-p24. As is typical for genes encoding ribosomal proteins, there are multiple processed pseudogenes of this gene dispersed through the genome. Alternatively spliced transcript variants encoding the same protein have been observed for this gene.

| | |
|-------------------|--|
| Molecular Weight: | Observed_MW: 16 kDa Calculated_MW: 15 kDa |
|-------------------|--|

| | |
|----------|------|
| Gene ID: | 6161 |
|----------|------|

| | |
|----------|------------------------|
| UniProt: | P62910 |
|----------|------------------------|

Application Details

| | |
|--------------------|--|
| Application Notes: | WB 1:500-1:2000 IHC 1:50-1:100 IF 1:50-1:100 |
|--------------------|--|

| | |
|---------------|-----------------------|
| Restrictions: | For Research Use only |
|---------------|-----------------------|

Handling

| | |
|---------|--------|
| Format: | Liquid |
|---------|--------|

| | |
|----------------|---------|
| Concentration: | 1 mg/mL |
|----------------|---------|

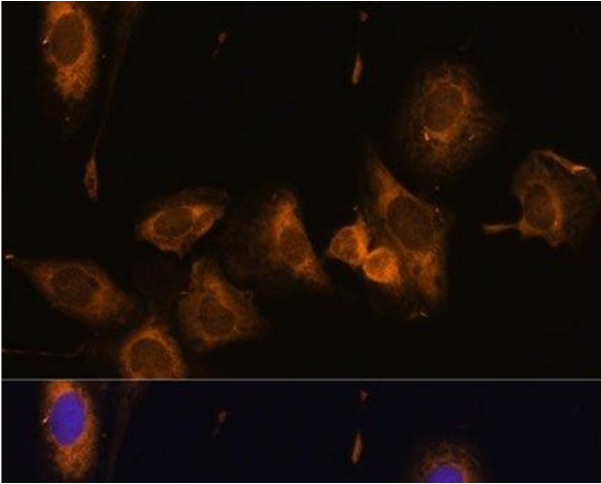
| | |
|---------|---|
| Buffer: | PBS with 0.02 % sodium azide, 50 % glycerol, pH 7.3 |
|---------|---|

| | |
|---------------|--------------|
| Preservative: | Sodium azide |
|---------------|--------------|

| | |
|--------------------|--|
| Precaution of Use: | This product contains Sodium azide: a POISONOUS AND HAZARDOUS SUBSTANCE which should be handled by trained staff only. |
|--------------------|--|

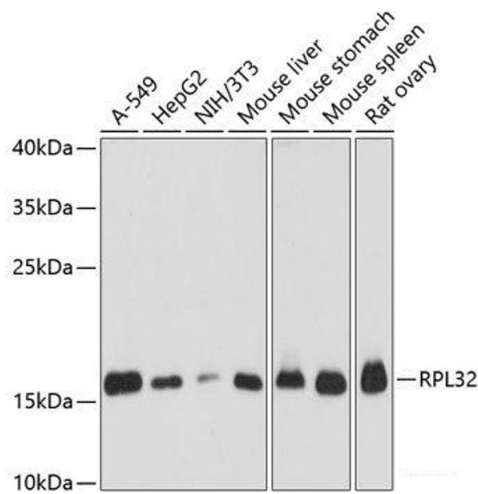
| | |
|----------|--------|
| Storage: | -20 °C |
|----------|--------|

| | |
|------------------|---|
| Storage Comment: | Store at -20°C. Avoid freeze / thaw cycles. |
|------------------|---|



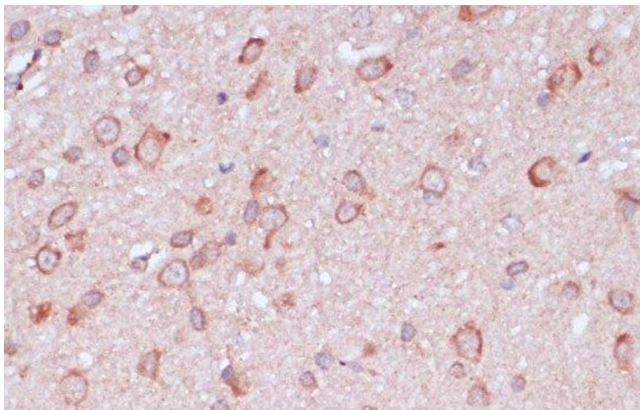
Immunofluorescence

Image 1. Immunofluorescence analysis of U-2 OS cells using RPL32 Polyclonal Antibody at dilution of 1:100 (40x lens). Blue: DAPI for nuclear staining.



Western Blotting

Image 2. Western blot analysis of extracts of various cell lines using RPL32 Polyclonal Antibody at dilution of 1:3000.



Immunohistochemistry (Paraffin-embedded Sections)

Image 3. Immunohistochemistry of paraffin-embedded Rat brain using RPL32 Polyclonal Antibody at dilution of 1:100 (40x lens).

Please check the [product details page](#) for more images. Overall 6 images are available for ABIN7256518.