



[Go to Product page](#)

Datasheet for ABIN7256524
anti-AKR1C1 antibody

1 Image

Overview

Quantity:	200 µL
Target:	AKR1C1 (DDH)
Reactivity:	Human, Mouse
Host:	Rabbit
Clonality:	Polyclonal
Conjugate:	This AKR1C1 antibody is un-conjugated
Application:	Western Blotting (WB)

Product Details

Immunogen:	Recombinant fusion protein of human AKR1C1 (NP_001344.2).
Isotype:	IgG
Characteristics:	Polyclonal Antibody
Purification:	Affinity purification

Target Details

Target:	AKR1C1 (DDH)
Alternative Name:	AKR1C1 (DDH Products)
Background:	This gene encodes a member of the aldo/keto reductase superfamily, which consists of more than 40 known enzymes and proteins. These enzymes catalyze the conversion of aldehydes and ketones to their corresponding alcohols by utilizing NADH and/or NADPH as cofactors. The enzymes display overlapping but distinct substrate specificity. This enzyme catalyzes the

Target Details

reaction of progesterone to the inactive form 20-alpha-hydroxy-progesterone. This gene shares high sequence identity with three other gene members and is clustered with those three genes at chromosome 10p15-p14.

Molecular Weight: Observed_MW: 38 kDa
Calculated_MW: 36 kDa

Gene ID: 1645

UniProt: [Q04828](#)

Pathways: [Steroid Hormone Biosynthesis](#), [C21-Steroid Hormone Metabolic Process](#)

Application Details

Application Notes: WB 1:1000-1:3000

Restrictions: For Research Use only

Handling

Format: Liquid

Concentration: 1 mg/mL

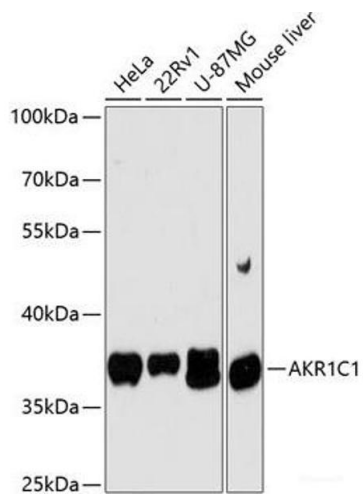
Buffer: PBS with 0.02 % sodium azide, 50 % glycerol, pH 7.3

Preservative: Sodium azide

Precaution of Use: This product contains Sodium azide: a POISONOUS AND HAZARDOUS SUBSTANCE which should be handled by trained staff only.

Storage: -20 °C

Storage Comment: Store at -20°C. Avoid freeze / thaw cycles.



Western Blotting

Image 1. Western blot analysis of extracts of various cell lines using AKR1C1 Polyclonal Antibody at dilution of 1:3000.