

Datasheet for ABIN7256548

anti-Myosin VI antibody

3 Images

[Go to Product page](#)

Overview

Quantity:	200 µL
Target:	Myosin VI (MYO6)
Reactivity:	Human, Mouse, Rat
Host:	Rabbit
Clonality:	Polyclonal
Conjugate:	This Myosin VI antibody is un-conjugated
Application:	Western Blotting (WB), Immunofluorescence (IF)

Product Details

Immunogen:	Recombinant fusion protein of human MYO6 (NP_004990.3).
Isotype:	IgG
Characteristics:	Polyclonal Antibody
Purification:	Affinity purification

Target Details

Target:	Myosin VI (MYO6)
Alternative Name:	MYO6 (MYO6 Products)
Background:	This gene encodes a reverse-direction motor protein that moves toward the minus end of actin filaments and plays a role in intracellular vesicle and organelle transport. The protein consists of a motor domain containing an ATP- and an actin-binding site and a globular tail which interacts with other proteins. This protein maintains the structural integrity of inner ear hair cells

Target Details

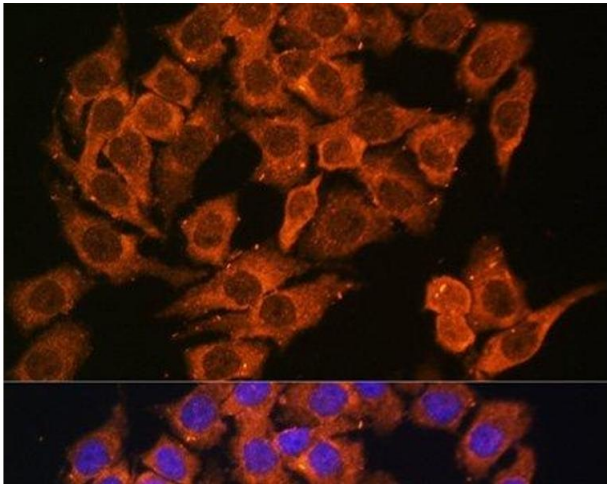
	and mutations in this gene cause non-syndromic autosomal dominant and recessive hearing loss. Alternative splicing results in multiple transcript variants encoding distinct isoforms.
Molecular Weight:	Observed_MW: 150 kDa Calculated_MW: 145 kDa/146 kDa/148 kDa/149 kDa
Gene ID:	4646
UniProt:	Q9UM54
Pathways:	Sensory Perception of Sound , Dicarboxylic Acid Transport , Asymmetric Protein Localization

Application Details

Application Notes:	WB 1:500-1:2000 IF 1:50-1:200
Restrictions:	For Research Use only

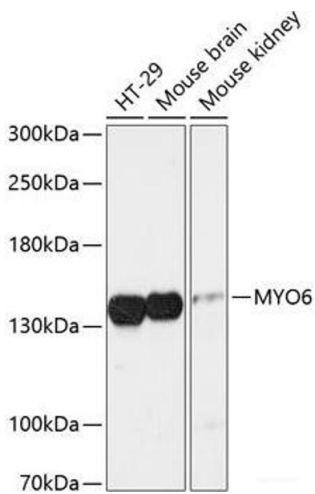
Handling

Format:	Liquid
Concentration:	1 mg/mL
Buffer:	PBS with 0.02 % sodium azide, 50 % glycerol, pH 7.3
Preservative:	Sodium azide
Precaution of Use:	This product contains Sodium azide: a POISONOUS AND HAZARDOUS SUBSTANCE which should be handled by trained staff only.
Storage:	-20 °C
Storage Comment:	Store at -20°C. Avoid freeze / thaw cycles.



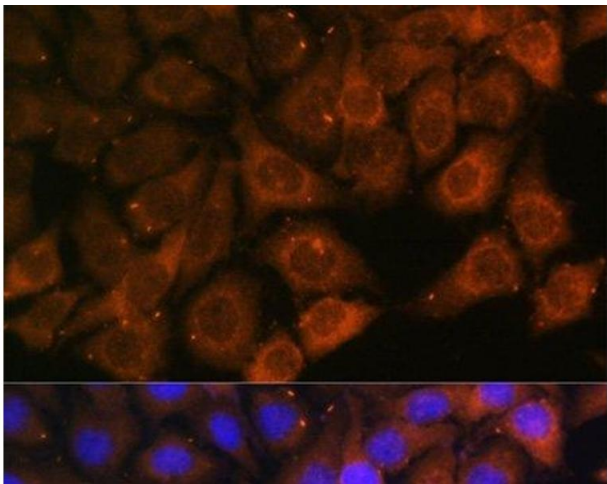
Immunofluorescence

Image 1. Immunofluorescence analysis of HeLa cells using MYO6 Polyclonal Antibody at dilution of 1:100. Blue: DAPI for nuclear staining.



Western Blotting

Image 2. Western blot analysis of extracts of various cell lines using MYO6 Polyclonal Antibody at dilution of 1:3000.



Immunofluorescence

Image 3. Immunofluorescence analysis of HeLa cells using MYO6 Polyclonal Antibody at dilution of 1:100. Blue: DAPI for nuclear staining.