

Datasheet for ABIN7256558

**anti-MAPK12 antibody**[Go to Product page](#)**1** Image

## Overview

Quantity:	200 µL
Target:	MAPK12
Reactivity:	Human, Mouse, Rat
Host:	Rabbit
Clonality:	Polyclonal
Conjugate:	This MAPK12 antibody is un-conjugated
Application:	Western Blotting (WB)

## Product Details

Immunogen:	Recombinant fusion protein of human MAPK12 (NP_002960.2).
Isotype:	IgG
Characteristics:	Polyclonal Antibody
Purification:	Affinity purification

## Target Details

Target:	MAPK12
Alternative Name:	MAPK12 ( <a href="#">MAPK12 Products</a> )
Background:	Activation of members of the mitogen-activated protein kinase family is a major mechanism for transduction of extracellular signals. Stress-activated protein kinases are one subclass of MAP kinases. The protein encoded by this gene functions as a signal transducer during differentiation of myoblasts to myotubes.

## Target Details

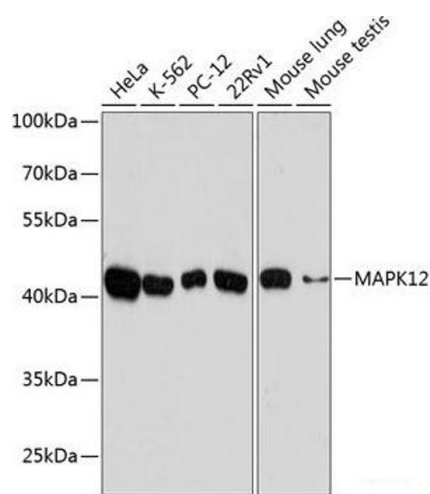
Molecular Weight:	Observed_MW: 42 kDa
	Calculated_MW: 40 kDa/41 kDa
Gene ID:	6300
UniProt:	<a href="#">P53778</a>
Pathways:	<a href="#">MAPK Signaling</a> , <a href="#">Neurotrophin Signaling Pathway</a> , <a href="#">Regulation of Muscle Cell Differentiation</a> , <a href="#">Hepatitis C</a> , <a href="#">BCR Signaling</a> , <a href="#">S100 Proteins</a>

## Application Details

Application Notes:	WB 1:2000-1:5000
Restrictions:	For Research Use only

## Handling

Format:	Liquid
Concentration:	1 mg/mL
Buffer:	PBS with 0.02 % sodium azide, 50 % glycerol, pH 7.3
Preservative:	Sodium azide
Precaution of Use:	This product contains Sodium azide: a POISONOUS AND HAZARDOUS SUBSTANCE which should be handled by trained staff only.
Storage:	-20 °C
Storage Comment:	Store at -20°C. Avoid freeze / thaw cycles.



Western Blotting

**Image 1.** Western blot analysis of extracts of various cell lines using MAPK12 Polyclonal Antibody at dilution of 1:10000.