

Datasheet for ABIN7256580

anti-BET1 antibody**1** Image[Go to Product page](#)

Overview

Quantity:	200 µL
Target:	BET1
Reactivity:	Human
Host:	Rabbit
Clonality:	Polyclonal
Conjugate:	This BET1 antibody is un-conjugated
Application:	Western Blotting (WB)

Product Details

Immunogen:	Recombinant fusion protein of human BET1 (NP_005859.1).
Isotype:	IgG
Characteristics:	Polyclonal Antibody
Purification:	Affinity purification

Target Details

Target:	BET1
Alternative Name:	BET1 (BET1 Products)
Background:	This gene encodes a golgi-associated membrane protein that participates in vesicular transport from the endoplasmic reticulum (ER) to the Golgi complex. The encoded protein functions as a soluble N-ethylmaleimide-sensitive factor attachment protein receptor and may be involved in the docking of ER-derived vesicles with the cis-Golgi membrane. Alternative splicing results in

Target Details

	multiple transcript variants.
Molecular Weight:	Observed_MW: 13 kDa Calculated_MW: 9 kDa/13 kDa
Gene ID:	10282
UniProt:	O15155

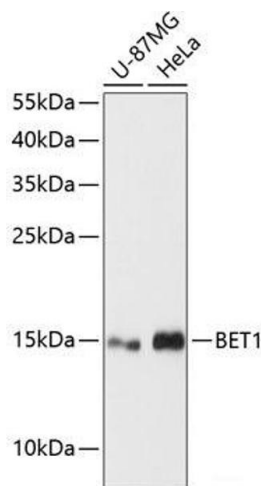
Application Details

Application Notes:	WB 1:500-1:2000
Restrictions:	For Research Use only

Handling

Format:	Liquid
Concentration:	1 mg/mL
Buffer:	PBS with 0.02 % sodium azide, 50 % glycerol, pH 7.3
Preservative:	Sodium azide
Precaution of Use:	This product contains Sodium azide: a POISONOUS AND HAZARDOUS SUBSTANCE which should be handled by trained staff only.
Storage:	-20 °C
Storage Comment:	Store at -20°C. Avoid freeze / thaw cycles.

Images



Western Blotting

Image 1. Western blot analysis of extracts of various cell lines using BET1 Polyclonal Antibody at dilution of 1:3000.