

Datasheet for ABIN7256610

anti-PPME1 antibody[Go to Product page](#)**1** Image

Overview

Quantity:	200 µL
Target:	PPME1
Reactivity:	Human, Mouse, Rat
Host:	Rabbit
Clonality:	Polyclonal
Conjugate:	This PPME1 antibody is un-conjugated
Application:	Western Blotting (WB)

Product Details

Immunogen:	Recombinant fusion protein of human PPME1 (NP_057231.1).
Isotype:	IgG
Characteristics:	Polyclonal Antibody
Purification:	Affinity purification

Target Details

Target:	PPME1
Alternative Name:	PPME1 (PPME1 Products)
Background:	This gene encodes a protein phosphatase methylesterase localized to the nucleus. The encoded protein acts on the protein phosphatase-2A catalytic subunit and supports the ERK pathway through dephosphorylation of regulatory proteins. It plays a role in malignant glioma progression. Alternative splicing results in multiple transcript variants.

Target Details

Molecular Weight:	Observed_MW: 42 kDa
	Calculated_MW: 18 kDa/22 kDa/42 kDa/43 kDa
Gene ID:	51400
UniProt:	Q9Y570
Pathways:	Methionine Biosynthetic Process

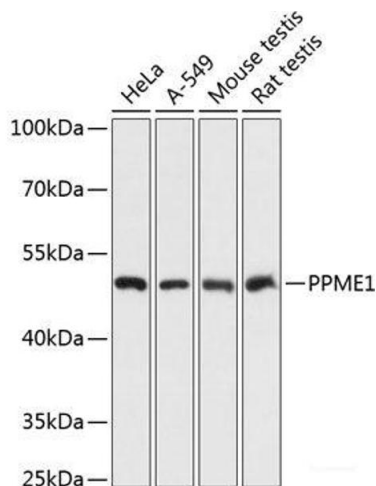
Application Details

Application Notes:	WB 1:500-1:2000
Restrictions:	For Research Use only

Handling

Format:	Liquid
Concentration:	1 mg/mL
Buffer:	PBS with 0.02 % sodium azide, 50 % glycerol, pH 7.3
Preservative:	Sodium azide
Precaution of Use:	This product contains Sodium azide: a POISONOUS AND HAZARDOUS SUBSTANCE which should be handled by trained staff only.
Storage:	-20 °C
Storage Comment:	Store at -20°C. Avoid freeze / thaw cycles.

Images



Western Blotting

Image 1. Western blot analysis of extracts of various cell lines using PPME1 Polyclonal Antibody at dilution of 1:3000.