



[Go to Product page](#)

Datasheet for ABIN7256620

## anti-HFE antibody

### 1 Image

#### Overview

Quantity:	200 µL
Target:	HFE
Reactivity:	Human, Mouse
Host:	Rabbit
Clonality:	Polyclonal
Conjugate:	This HFE antibody is un-conjugated
Application:	Immunofluorescence (IF)

#### Product Details

Immunogen:	Recombinant fusion protein of human HFE (NP_000401.1).
Isotype:	IgG
Characteristics:	Polyclonal Antibody
Purification:	Affinity purification

#### Target Details

Target:	HFE
Alternative Name:	HFE ( <a href="#">HFE Products</a> )
Background:	The protein encoded by this gene is a membrane protein that is similar to MHC class I-type proteins and associates with beta2-microglobulin (beta2M). It is thought that this protein functions to regulate iron absorption by regulating the interaction of the transferrin receptor with transferrin. The iron storage disorder, hereditary haemochromatosis, is a recessive genetic

## Target Details

---

disorder that results from defects in this gene. At least nine alternatively spliced variants have been described for this gene. Additional variants have been found but their full-length nature has not been determined.

Gene ID: 3077

UniProt: [Q30201](#)

Pathways: [Transition Metal Ion Homeostasis](#), [Regulation of Leukocyte Mediated Immunity](#), [Positive Regulation of Immune Effector Process](#)

## Application Details

---

Application Notes: IF 1:50-1:200

Restrictions: For Research Use only

## Handling

---

Format: Liquid

Concentration: 1 mg/mL

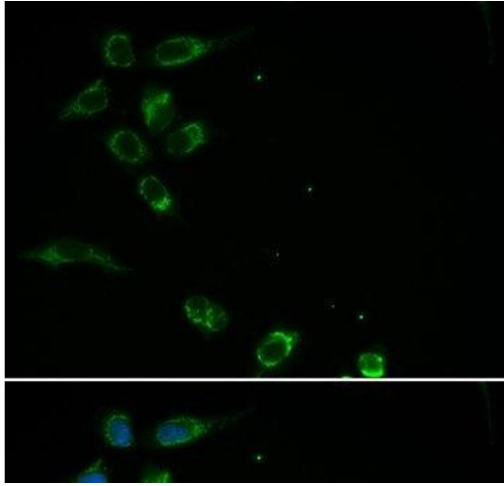
Buffer: PBS with 0.02 % sodium azide, 50 % glycerol, pH 7.3

Preservative: Sodium azide

Precaution of Use: This product contains Sodium azide: a POISONOUS AND HAZARDOUS SUBSTANCE which should be handled by trained staff only.

Storage: -20 °C

Storage Comment: Store at -20°C. Avoid freeze / thaw cycles.



### Immunofluorescence

**Image 1.** Immunofluorescence analysis of MCF-7 cells using HFE Polyclonal Antibody