



[Go to Product page](#)

Datasheet for ABIN7256632

anti-LRRC7 antibody

4 Images

Overview

| | |
|--------------|--|
| Quantity: | 200 µL |
| Target: | LRRC7 |
| Reactivity: | Human, Mouse, Rat |
| Host: | Rabbit |
| Clonality: | Polyclonal |
| Conjugate: | This LRRC7 antibody is un-conjugated |
| Application: | Western Blotting (WB), Immunofluorescence (IF) |

Product Details

| | |
|------------------|--|
| Immunogen: | Recombinant fusion protein of human LRRC7 (NP_065845.1). |
| Isotype: | IgG |
| Characteristics: | Polyclonal Antibody |
| Purification: | Affinity purification |

Target Details

| | |
|-------------------|--|
| Target: | LRRC7 |
| Alternative Name: | LRRC7 (LRRC7 Products) |
| Background: | LRRC7 (Leucine Rich Repeat Containing 7) is a Protein Coding gene. Diseases associated with LRRC7 include Dental Pulp Necrosis and Chromosome 3Q29 Deletion Syndrome. Among its related pathways are Innate Immune System. An important paralog of this gene is ERBIN. |

Target Details

| | |
|-------------------|---|
| Molecular Weight: | Observed_MW: 172 kDa Calculated_MW: 20 kDa/167 kDa/172 kDa |
| Gene ID: | 57554 |
| UniProt: | Q96NW7 |
| Pathways: | Synaptic Membrane |

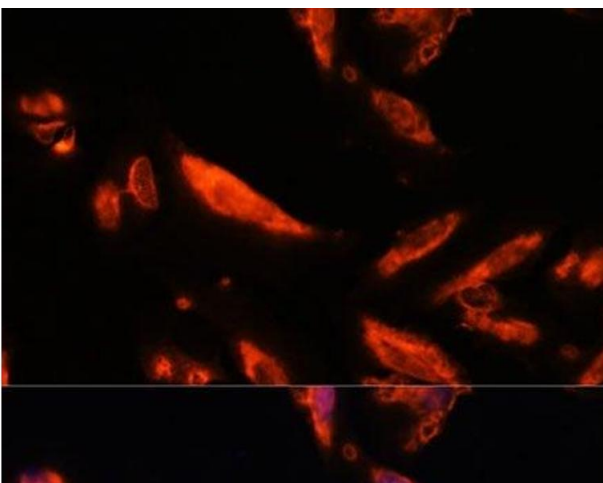
Application Details

| | |
|--------------------|-------------------------------|
| Application Notes: | WB 1:500-1:2000 IF 1:50-1:200 |
| Restrictions: | For Research Use only |

Handling

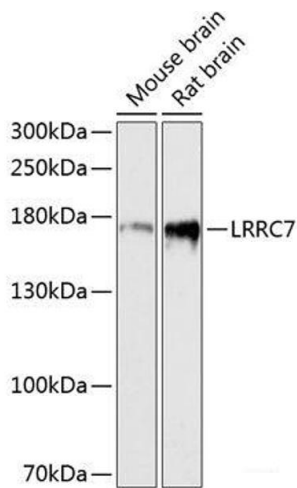
| | |
|--------------------|--|
| Format: | Liquid |
| Concentration: | 1 mg/mL |
| Buffer: | PBS with 0.02 % sodium azide, 50 % glycerol, pH 7.3 |
| Preservative: | Sodium azide |
| Precaution of Use: | This product contains Sodium azide: a POISONOUS AND HAZARDOUS SUBSTANCE which should be handled by trained staff only. |
| Storage: | -20 °C |
| Storage Comment: | Store at -20°C. Avoid freeze / thaw cycles. |

Images



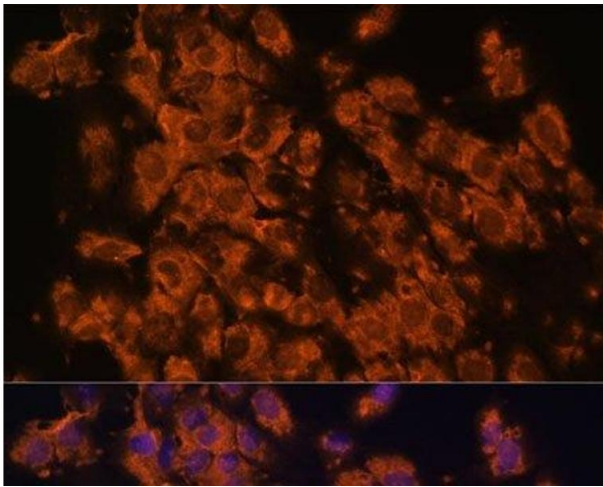
Immunofluorescence

Image 1. Immunofluorescence analysis of U-2 OS cells using LRRC7 Polyclonal Antibody at dilution of 1:100. Blue: DAPI for nuclear staining.



Western Blotting

Image 2. Western blot analysis of extracts of various cell lines using LRRC7 Polyclonal Antibody at dilution of 1:3000.



Immunofluorescence

Image 3. Immunofluorescence analysis of C6 cells using LRRC7 Polyclonal Antibody at dilution of 1:100. Blue: DAPI for nuclear staining.

Please check the [product details page](#) for more images. Overall 4 images are available for ABIN7256632.