



## Datasheet for ABIN7256636 anti-CWC22 antibody



[Go to Product page](#)

### 1 Image

#### Overview

Quantity:	200 µL
Target:	CWC22
Reactivity:	Mouse
Host:	Rabbit
Clonality:	Polyclonal
Conjugate:	This CWC22 antibody is un-conjugated
Application:	Western Blotting (WB)

#### Product Details

Immunogen:	Recombinant fusion protein of human CWC22 (NP_065994.1).
Isotype:	IgG
Characteristics:	Polyclonal Antibody
Purification:	Affinity purification

#### Target Details

Target:	CWC22
Alternative Name:	CWC22 ( <a href="#">CWC22 Products</a> )
Background:	CWC22 (CWC22 Spliceosome Associated Protein Homolog) is a Protein Coding gene. Diseases associated with CWC22 include Hard Palate Cancer and Bruxism. Among its related pathways are Gene Expression and mRNA Splicing - Major Pathway. Gene Ontology (GO) annotations related to this gene include RNA binding and binding. An important paralog of this gene is

## Target Details

NOM1.

Molecular Weight: Observed\_MW: 110 kDa  
Calculated\_MW: 105 kDa

Gene ID: 57703

UniProt: [Q9HCG8](#)

## Application Details

Application Notes: WB 1:1000-1:2000

Restrictions: For Research Use only

## Handling

Format: Liquid

Concentration: 1 mg/mL

Buffer: PBS with 0.02 % sodium azide, 50 % glycerol, pH 7.3

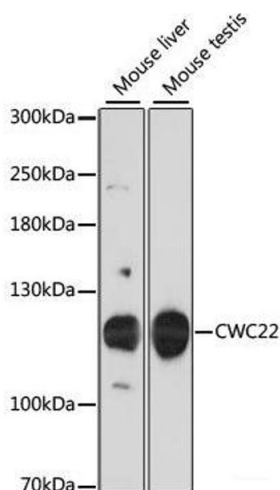
Preservative: Sodium azide

Precaution of Use: This product contains Sodium azide: a POISONOUS AND HAZARDOUS SUBSTANCE which should be handled by trained staff only.

Storage: -20 °C

Storage Comment: Store at -20°C. Avoid freeze / thaw cycles.

## Images



### Western Blotting

**Image 1.** Western blot analysis of extracts of various cell lines using CWC22 Polyclonal Antibody at dilution of 1:3000.