



[Go to Product page](#)

Datasheet for ABIN7256644  
**anti-MTMR9 antibody**

3 Images

### Overview

Quantity:	200 µL
Target:	MTMR9
Reactivity:	Human, Mouse, Rat
Host:	Rabbit
Clonality:	Polyclonal
Conjugate:	This MTMR9 antibody is un-conjugated
Application:	Western Blotting (WB), Immunofluorescence (IF)

### Product Details

Immunogen:	Recombinant fusion protein of human MTMR9 (NP_056273.2).
Isotype:	IgG
Characteristics:	Polyclonal Antibody
Purification:	Affinity purification

### Target Details

Target:	MTMR9
Alternative Name:	MTMR9 ( <a href="#">MTMR9 Products</a> )
Background:	This gene encodes a myotubularin-related protein that is atypical to most other members of the myotubularin-related protein family because it has no dual-specificity phosphatase domain. The encoded protein contains a double-helical motif similar to the SET interaction domain, which is thought to have a role in the control of cell proliferation. In mouse, a protein similar to the

## Target Details

---

encoded protein binds with MTMR7, and together they dephosphorylate phosphatidylinositol 3-phosphate and inositol 1,3-bisphosphate.

Molecular Weight: Observed\_MW: 63 kDa  
Calculated\_MW: 53 kDa/63 kDa

Gene ID: 66036

UniProt: [Q96QG7](#)

## Application Details

---

Application Notes: WB 1:1000-1:2000 IF 1:50-1:200

Restrictions: For Research Use only

## Handling

---

Format: Liquid

Concentration: 1 mg/mL

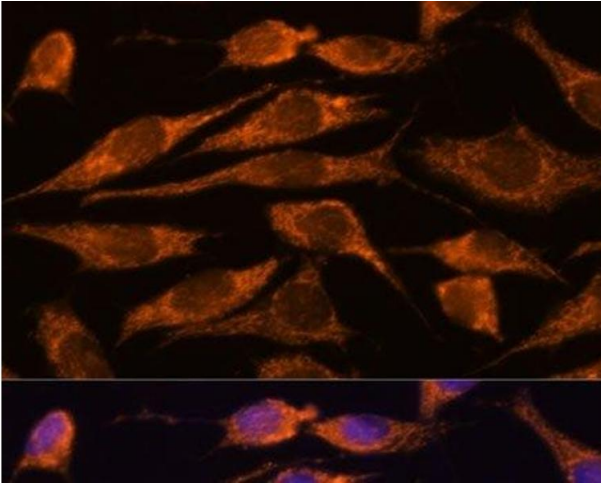
Buffer: PBS with 0.02 % sodium azide, 50 % glycerol, pH 7.3

Preservative: Sodium azide

Precaution of Use: This product contains Sodium azide: a POISONOUS AND HAZARDOUS SUBSTANCE which should be handled by trained staff only.

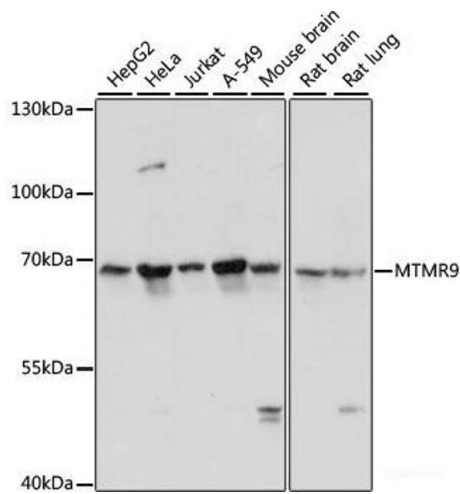
Storage: -20 °C

Storage Comment: Store at -20°C. Avoid freeze / thaw cycles.



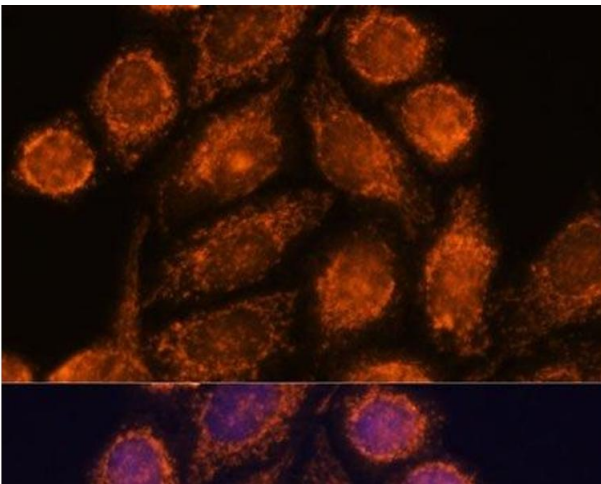
### Immunofluorescence

**Image 1.** Immunofluorescence analysis of L929 cells using MTMR9 Polyclonal Antibody at dilution of 1:100. Blue: DAPI for nuclear staining.



### Western Blotting

**Image 2.** Western blot analysis of extracts of various cell lines using MTMR9 Polyclonal Antibody at dilution of 1:3000.



### Immunofluorescence

**Image 3.** Immunofluorescence analysis of HeLa cells using MTMR9 Polyclonal Antibody at dilution of 1:100. Blue: DAPI for nuclear staining.