

Datasheet for ABIN7256662

anti-RAVER1 antibody[Go to Product page](#)**1** Image

Overview

| | |
|--------------|--------------------------------------|
| Quantity: | 200 µL |
| Target: | RAVER1 |
| Reactivity: | Human, Mouse |
| Host: | Rabbit |
| Clonality: | Polyclonal |
| Conjugate: | This RAVR1 antibody is un-conjugated |
| Application: | Western Blotting (WB) |

Product Details

| | |
|------------------|--|
| Immunogen: | Recombinant fusion protein of human RAVR1 (NP_597709.2). |
| Isotype: | IgG |
| Characteristics: | Polyclonal Antibody |
| Purification: | Affinity purification |

Target Details

| | |
|-------------------|--|
| Target: | RAVER1 |
| Alternative Name: | RAVER1 (RAVER1 Products) |
| Background: | RAVER1 (Ribonucleoprotein, PTB Binding 1) is a Protein Coding gene. Gene Ontology (GO) annotations related to this gene include nucleic acid binding and nucleotide binding. An important paralog of this gene is RAVR2. |

Target Details

| | |
|-------------------|------------------------------------|
| Molecular Weight: | Observed_MW: 64 kDa |
| | Calculated_MW: 8 kDa/63 kDa/77 kDa |
| Gene ID: | 125950 |
| UniProt: | Q8IY67 |

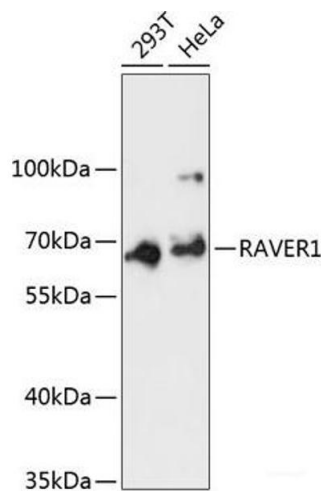
Application Details

| | |
|--------------------|-----------------------|
| Application Notes: | WB 1:500-1:2000 |
| Restrictions: | For Research Use only |

Handling

| | |
|--------------------|--|
| Format: | Liquid |
| Concentration: | 1 mg/mL |
| Buffer: | PBS with 0.02 % sodium azide, 50 % glycerol, pH 7.3 |
| Preservative: | Sodium azide |
| Precaution of Use: | This product contains Sodium azide: a POISONOUS AND HAZARDOUS SUBSTANCE which should be handled by trained staff only. |
| Storage: | -20 °C |
| Storage Comment: | Store at -20°C. Avoid freeze / thaw cycles. |

Images



Western Blotting

Image 1. Western blot analysis of extracts of various cell lines using RAVR1 Polyclonal Antibody at dilution of 1:3000.