

Datasheet for ABIN7256670

anti-DNASEX antibody

3 Images

[Go to Product page](#)

Overview

Quantity:	200 µL
Target:	DNASEX
Reactivity:	Mouse, Rat
Host:	Rabbit
Clonality:	Polyclonal
Conjugate:	This DNASEX antibody is un-conjugated
Application:	Western Blotting (WB), Immunofluorescence (IF)

Product Details

Immunogen:	Recombinant fusion protein of human DNASE1L1 (NP_006721.1).
Isotype:	IgG
Characteristics:	Polyclonal Antibody
Purification:	Affinity purification

Target Details

Target:	DNASEX
Alternative Name:	DNASE1L1 (DNASEX Products)
Background:	This gene encodes a deoxyribonuclease protein that shows high sequence similarity to DNase I. The encoded protein is localized to the endoplasmic reticulum and modified by N-linked glycosylation. Alternate transcriptional splice variants encoding the same protein have been observed.

Target Details

Molecular Weight:	Observed_MW: 34 kDa Calculated_MW: 33 kDa
-------------------	--

Gene ID:	1774
----------	------

UniProt:	P49184
----------	------------------------

Application Details

Application Notes:	WB 1:500-1:2000 IF 1:50-1:200
--------------------	-------------------------------

Restrictions:	For Research Use only
---------------	-----------------------

Handling

Format:	Liquid
---------	--------

Concentration:	1 mg/mL
----------------	---------

Buffer:	PBS with 0.02 % sodium azide, 50 % glycerol, pH 7.3
---------	---

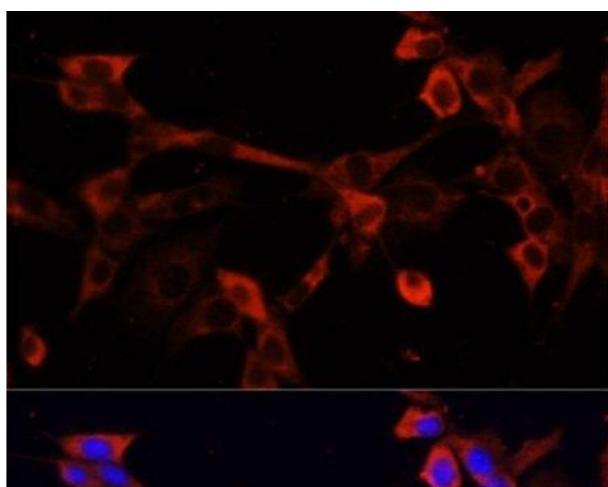
Preservative:	Sodium azide
---------------	--------------

Precaution of Use:	This product contains Sodium azide: a POISONOUS AND HAZARDOUS SUBSTANCE which should be handled by trained staff only.
--------------------	--

Storage:	-20 °C
----------	--------

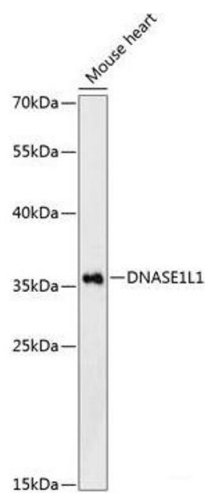
Storage Comment:	Store at -20°C. Avoid freeze / thaw cycles.
------------------	---

Images



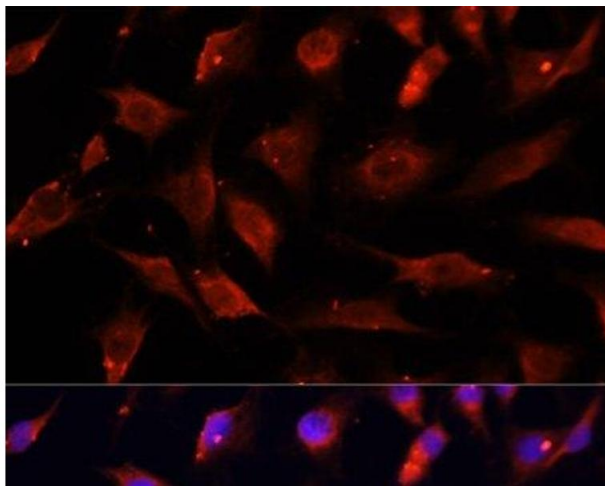
Immunofluorescence

Image 1. Immunofluorescence analysis of NIH/3T3 cells using DNASE1L1 Polyclonal Antibody at dilution of 1:100. Blue: DAPI for nuclear staining.



Western Blotting

Image 2. Western blot analysis of extracts of Mouse heart using DNASE1L1 Polyclonal Antibody at dilution of 1:3000.



Immunofluorescence

Image 3. Immunofluorescence analysis of C6 cells using DNASE1L1 Polyclonal Antibody at dilution of 1:100. Blue: DAPI for nuclear staining.