



[Go to Product page](#)

Datasheet for ABIN7256696 **anti-KLF10/TIEG1 antibody**

1 Image

Overview

Quantity:	200 µL
Target:	KLF10/TIEG1 (KLF10)
Reactivity:	Mouse, Rat
Host:	Rabbit
Clonality:	Polyclonal
Conjugate:	This KLF10/TIEG1 antibody is un-conjugated
Application:	Western Blotting (WB)

Product Details

Immunogen:	Recombinant fusion protein of human KLF10 (NP_001027453.1).
Isotype:	IgG
Characteristics:	Polyclonal Antibody
Purification:	Affinity purification

Target Details

Target:	KLF10/TIEG1 (KLF10)
Alternative Name:	KLF10 (KLF10 Products)
Background:	This gene encodes a member of a family of proteins that feature C2H2-type zinc finger domains. The encoded protein is a transcriptional repressor that acts as an effector of transforming growth factor beta signaling. Activity of this protein may inhibit the growth of cancers, particularly pancreatic cancer. Alternative splicing results in multiple transcript

Target Details

variants.

Molecular Weight: Observed_MW: 56 kDa
Calculated_MW: 10 kDa/13 kDa/51 kDa/52 kDa

Gene ID: 7071

UniProt: [Q13118](#)

Pathways: [Stem Cell Maintenance](#)

Application Details

Application Notes: WB 1:500-1:2000

Restrictions: For Research Use only

Handling

Format: Liquid

Concentration: 1 mg/mL

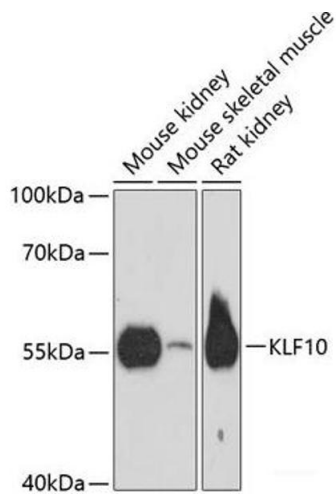
Buffer: PBS with 0.02 % sodium azide, 50 % glycerol, pH 7.3

Preservative: Sodium azide

Precaution of Use: This product contains Sodium azide: a POISONOUS AND HAZARDOUS SUBSTANCE which should be handled by trained staff only.

Storage: -20 °C

Storage Comment: Store at -20°C. Avoid freeze / thaw cycles.



Western Blotting

Image 1. Western blot analysis of extracts of various cell lines using KLF10 Polyclonal Antibody at dilution of 1:3000.