

Datasheet for ABIN7256718

anti-WBP1 antibody**1** Image[Go to Product page](#)

Overview

Quantity:	200 µL
Target:	WBP1
Reactivity:	Human, Mouse, Rat
Host:	Rabbit
Clonality:	Polyclonal
Conjugate:	This WBP1 antibody is un-conjugated
Application:	Western Blotting (WB)

Product Details

Immunogen:	Recombinant fusion protein of human WBP1 (NP_036609.1).
Isotype:	IgG
Characteristics:	Polyclonal Antibody
Purification:	Affinity purification

Target Details

Target:	WBP1
Alternative Name:	WBP1 (WBP1 Products)
Background:	The globular WW domain, named for the conserved tryptophan residues in the protein motif present in various structural and regulatory proteins, is known to play a role in the mediation of protein-protein interactions. This gene encodes a ligand of the WW domain of the Yes kinase-associated protein. Readthrough transcription of the neighboring upstream gene, which

Target Details

	encodes INO80 complex subunit B, into this gene generates a non-coding transcript.
Molecular Weight:	Observed_MW: 29 kDa Calculated_MW: 29 kDa
Gene ID:	23559
UniProt:	Q96G27

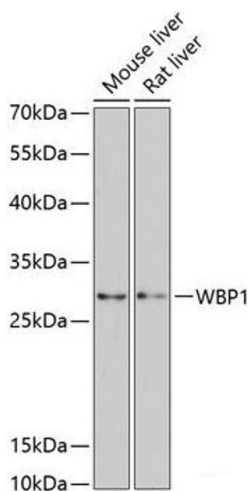
Application Details

Application Notes:	WB 1:500-1:2000
Restrictions:	For Research Use only

Handling

Format:	Liquid
Concentration:	1 mg/mL
Buffer:	PBS with 0.02 % sodium azide, 50 % glycerol, pH 7.3
Preservative:	Sodium azide
Precaution of Use:	This product contains Sodium azide: a POISONOUS AND HAZARDOUS SUBSTANCE which should be handled by trained staff only.
Storage:	-20 °C
Storage Comment:	Store at -20°C. Avoid freeze / thaw cycles.

Images



Western Blotting

Image 1. Western blot analysis of extracts of various cell lines using WBP1 Polyclonal Antibody at dilution of 1:3000.