



[Go to Product page](#)

Datasheet for ABIN7256730
anti-RPS19BP1 antibody

2 Images

Overview

Quantity:	200 µL
Target:	RPS19BP1
Reactivity:	Human, Mouse, Rat
Host:	Rabbit
Clonality:	Polyclonal
Conjugate:	This RPS19BP1 antibody is un-conjugated
Application:	Western Blotting (WB), Immunofluorescence (IF)

Product Details

Immunogen:	Recombinant fusion protein of human RPS19BP1 (NP_919307.1).
Isotype:	IgG
Characteristics:	Polyclonal Antibody
Purification:	Affinity purification

Target Details

Target:	RPS19BP1
Alternative Name:	RPS19BP1 (RPS19BP1 Products)
Background:	RPS19BP1 (Ribosomal Protein S19 Binding Protein 1) is a Protein Coding gene. Diseases associated with RPS19BP1 include Inhibited Female Orgasm and Amyotrophic Lateral Sclerosis 1. Among its related pathways are Cellular response to heat stress and Cellular Senescence (REACTOME). Gene Ontology (GO) annotations related to this gene include enzyme

Target Details

	binding.
Molecular Weight:	Observed_MW: 20 kDa Calculated_MW: 15 kDa
Gene ID:	91582
UniProt:	Q86WX3

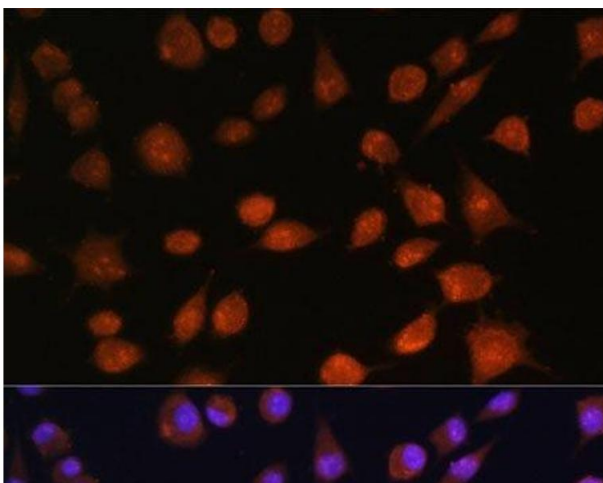
Application Details

Application Notes:	WB 1:500-1:2000 IF 1:50-1:200
Restrictions:	For Research Use only

Handling

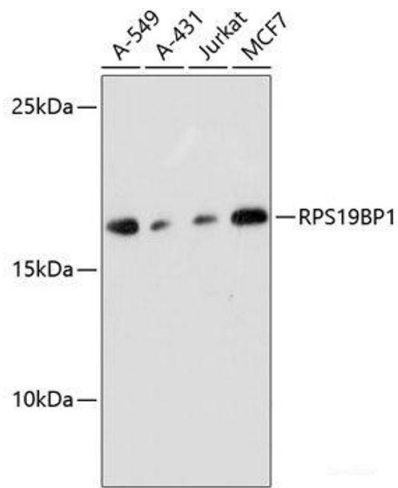
Format:	Liquid
Concentration:	1 mg/mL
Buffer:	PBS with 0.02 % sodium azide, 50 % glycerol, pH 7.3
Preservative:	Sodium azide
Precaution of Use:	This product contains Sodium azide: a POISONOUS AND HAZARDOUS SUBSTANCE which should be handled by trained staff only.
Storage:	-20 °C
Storage Comment:	Store at -20°C. Avoid freeze / thaw cycles.

Images



Immunofluorescence

Image 1. Immunofluorescence analysis of L929 cells using RPS19BP1 Polyclonal Antibody at dilution of 1:100. Blue: DAPI for nuclear staining.



Western Blotting

Image 2. Western blot analysis of extracts of various cell lines using RPS19BP1 Polyclonal Antibody at dilution of 1:3000.